

9

COINS FROM THE 2006–2008 EXCAVATIONS

DAVID M. RATZAN

9.1. INTRODUCTION

152 objects recorded as coins were recovered over three seasons at 'Ain el-Gedida. Six were recovered from area A (1–6), which was excavated by the SCA between 1993 and 1995 (Sec. 1.4). These coins were discovered by Nicola Aravecchia and his team during their survey and mapping of the area in 2006 and 2007. Area B was systematically excavated by Aravecchia from 2006 to 2008, yielding 146 coins from four distinct contexts: B1–B3 (likely domestic); B4 (also domestic); B17–B24 (west complex); B5–B15 (church complex and surrounding area).

This chapter consists of a numismatic analysis of the coin finds at 'Ain el-Gedida, followed by a complete catalogue organized by room and stratigraphic unit. My work proceeded largely on the basis of images and field notes from the 'Ain el-Gedida database. It is worth noting from the outset that the analysis and catalogue offered here is necessarily provisional, since a little more than a quarter of the coins have yet to be comprehensively cleaned, while many others would no doubt yield improved readings with autopsy. Also, several coins were photographed at different stages in their cleaning and conservation, and in many cases I have based readings on earlier images or a combination of the two.

The coin finds at 'Ain el-Gedida are typical for the Dakhla Oasis, in that they are comprised almost entirely of low-value, late Roman bronzes, with many pieces too worn or corroded to be legible. With the exception of a few variants of minor numismatic interest (6, 27, and 151), their value is entirely archaeological. Beyond the immediate aim of helping to establish the absolute

chronology of the site, the analysis below seeks to characterize the relationship of the coin finds at 'Ain el-Gedida to similar archaeological assemblages in Egypt with respect to the contemporary coin pool, circulation patterns, and patterns of coin use and loss.

9.2. PERIODS

In order to facilitate the analysis and comparison of the numismatic evidence from 'Ain el-Gedida with that published elsewhere, and in particular the excavations of the Centre d'Études Alexandrines by Marie-Christine Marcellesi, I have grouped the finds into conventional periods, adding an initial period of 270–296 (see Fig. 9.1).¹ Many coins, however, could not be assigned to a single period. Of these, fourteen could be dated to the fourth century (Periods 2–10) on the basis of the remaining traces; another five should most likely be assigned to the second half of the fourth century (Periods 6–10); and eight on the basis of module and surviving traces to the late fourth or early fifth century (Periods 8–11). While these twenty-seven coins retained some diagnostic traces, fifty-nine others were either so effaced or insufficiently cleaned as to render any dating, other than on the basis of module and material, impossible. There is, of course, no reason to doubt that they are all, or nearly all, bronze coins from the fourth and early fifth centuries; but that is a conclusion based entirely on archaeological inference. Since one of the chief aims of this chapter is to describe the numismatic evidence in service of the archaeology of the site, I have assigned no date or period (ND) to these fifty-nine coins in the catalogue. As the periods correspond to imperial minting patterns, they are not of equal length. It is therefore useful to calculate a relative frequency by taking the average number of coins per year per period (Fig. 9.2).

Period 1: 270–296

Coins: 5 Coins per year: 0.2

One of the tetradrachms (**29**) cannot be securely identified, being either a coin of Aurelian, Year 2 (= 271/2) or Diocletian, Year 2 (285/6). The other coins from this period (**30**, **33**, **34**, **38**) are tightly grouped from Probus, Year 5 (279/280) to Maximian, Year 2 (286/7). Aurelian's currency reform is reflected in the hoards, with most either closing with the end of his reign or starting after it.² This is therefore a useful starting point for this period, with Diocletian's currency reform in 296 representing a natural end point.³

Period 2: 296–312

No coins recovered at 'Ain el-Gedida could be securely attributed to this period.

1. Marcellesi 2012: 266–77; cf. Bowen 2012c, for some of the underlying hoard evidence.

2. Metcalf 1998.

3. The precise year Diocletian instituted his reform in Egypt is debated. See Metcalf 1987; cf. Christiansen 2004: 133.

Period 3: 312–324

Coins: 13 Coins per year: 1.1

Types:

Iovi conservatori (313–324): 1 example: **1** (Thessalonica, Licinius)

Soli invicto comiti (312–318): 6 examples: **2, 5, 6, 32, 150, 151**

Mints: 1 Lyons; 5 Rome

Emperors: 1 Licinius; 5 Constantine

Beata tranquillitas (320–324): 1 example: **27** (London, Constantine)

D N Constantini (320–324): 3 examples: **3, 12, 63**

Mints: 1 Ticinum; 2 Heraclea

Emperors: 3 Constantine

Providentiae Caess (317–320): 2 examples: **41, 114** (both Heraclea, Constantine)

Period 4: 324–330

Coins: 2 Coins per year: 0.3

Types:

Providentiae Caess/Augg (324–330): 2 examples: **4, 149**

Mints: 2 Thessalonica

Emperors: 1 Crispus Caesar; 1 Constantine

Period 5: 330–341

Coins: 8 Coins per year: 0.7

Types:

Gloria exercitus, two standards (330–335): 3 examples: **36, 56, 84**

Mints: 1 Rome, 1 Heraclea or Cyzicus

Emperors: 2 Constantine

Gloria exercitus, one standard (335–341): 4 examples: **20, 43, 122** (cast), **145**

Mints: 1 Constantinople, 1 Alexandria, Heraclea or Nicomedia

Emperors: 1 Constantine; 1 Constans

Constantinopolis (330–347?)⁴: 1 example: **26** (Alexandria)

Period 6: 341–348

Coins: 3 Coins per year: 0.4

Types:

Victoriae DD Auggq NN (341–348): 1 example: **97**

Vota of Constantine's sons (341–348): 2 examples: **21** (Constantius), **138** (Constans)

4. There is some uncertainty as to when this issue came to an end: cf. Marcellesi 2012: 433; Bruun 1966: 535.

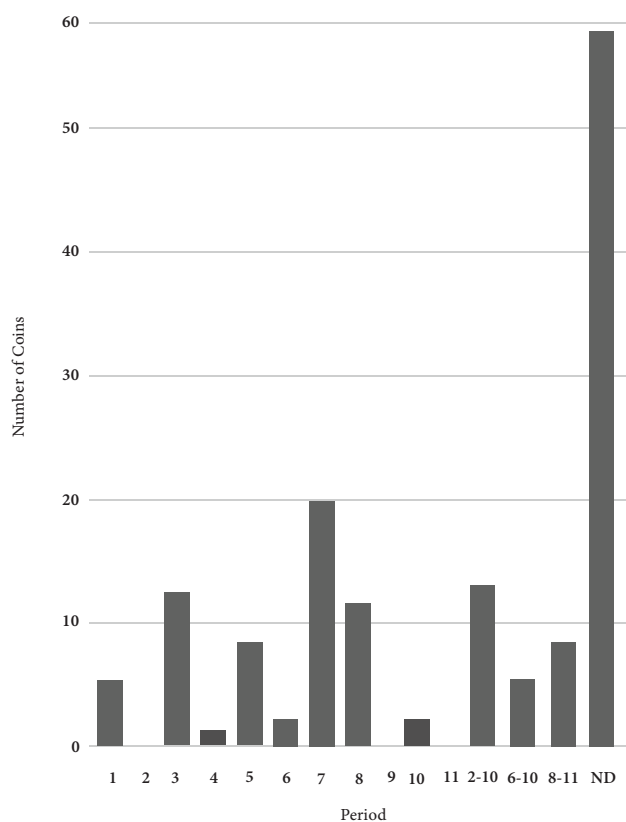


Fig. 9.1: Number of coins per period at 'Ain el-Gedida.

Period 7: 348–364

Coins: 20 Coins per year: 1.3

Types:

Fel temp reparatio, falling horseman (348–361): 16 examples, of which as many as 10 may be cast or imitations; almost all are AE3: **8, 13, 18, 19, 22, 24, 25, 31, 44, 48, 65, 80, 85, 89, 93, 135**

Mints: 2 Antioch, Thessalonica or Alexandria

Emperors: 7 Constantius; 1 Gallus or Julian

Spes reipublice (355–363): 1 example: **106** (Heraclea, Nicomedia or Cyzicus; cast)

Vota of Julian (361–363): 2 examples: **45, 81** (Sirmium; Antioch or Alexandria)

Vota of Jovian (363–364): 1 example: **83** (Alexandria)

Period 8: 364–378

Coins: 12 Coins per year: 0.9

Types:

Securitas reipublicae (364–378): 10 examples: **46, 52, 68, 71, 76, 77, 118, 123, 151, 152**, of which as many as 6 may be cast or imitations.

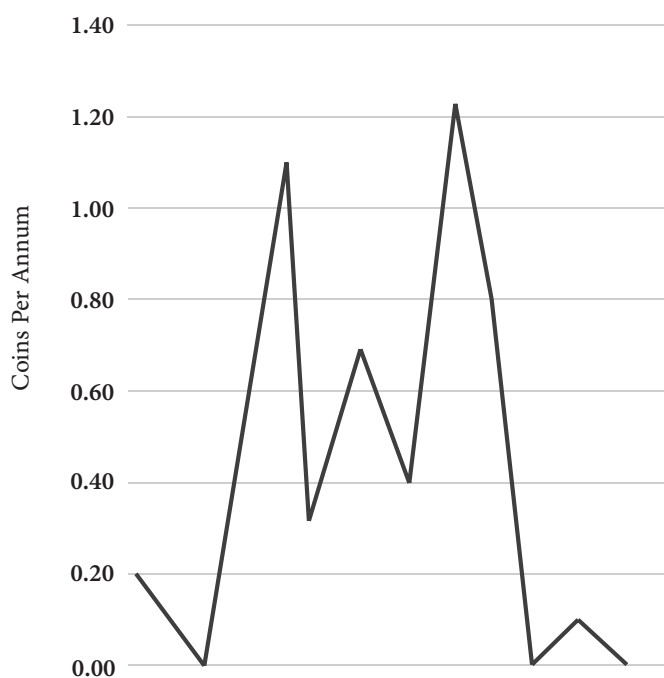


Fig. 9.2: Average number of coins per annum, per period at Ain el-Gedida.

Mints: 2 Alexandria
 Emperors: 1 Valens; 1 Gratian
Gloria Romanorum (364–378): 2 examples: 73 (cast?), 87

Period 9: 378–383

No coins recovered at Ain el-Gedida could be securely attributed to this period.

Period 10: 383–403

Coins: 3 Coins per year: 0.2

Types:

Vota of the house of Theodosius (383–393): 1 example: 142 (Alexandria, Arcadius)

Salus reipublicae (383–403): 1 example: 133

Gloria reipublice (383–392): 1 example: 49 (Thessalonica, Valentinian II)

Period 11: 404–457

No coins recovered at Ain el-Gedida could be securely attributed to this period.

Theoretically, changes in frequency will reflect some combination of: changes in space use or loss habits over time, underlying changes in the coin pool itself, and, potentially, differences in excavation technique and recording.⁵ Moreover, the fact that over half of the coins at 'Ain el-Gedida cannot be assigned to a single period somewhat vitiates the usefulness of this index. This, however, is not an unusual proportion of illegible coins discovered in Egyptian archaeological contexts, including Alexandria, which makes for a useful comparison (Fig. 9.3).⁶

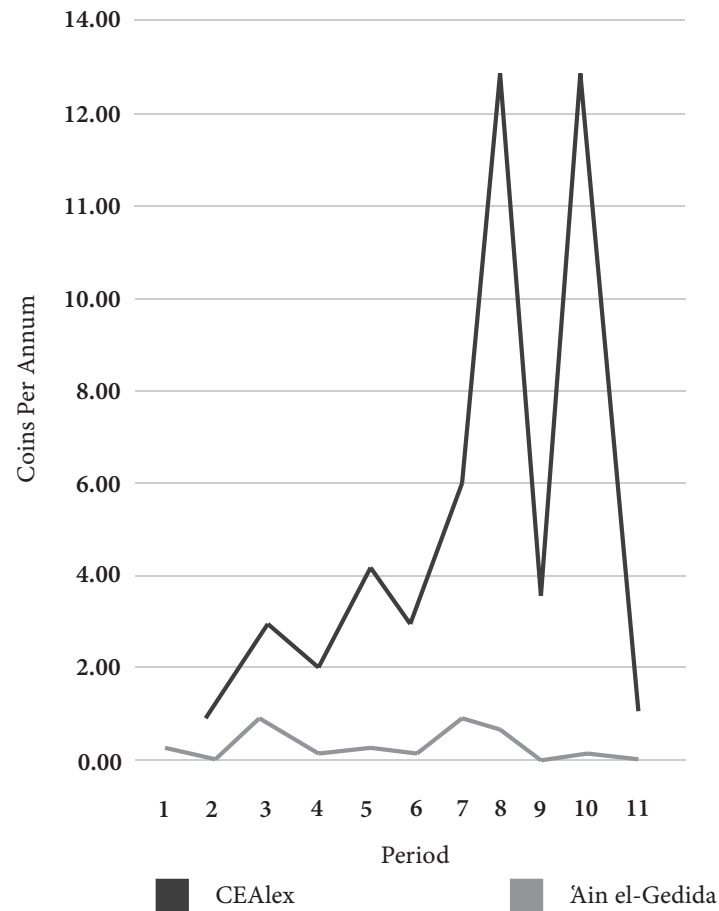


Fig. 9.3: Average number of coins per annum, per period at 'Ain el-Gedida and the excavations of Centre d'Études Alexandrines.⁷

As shown above, the frequency pattern at 'Ain el-Gedida broadly follows that at the Centre d'Études Alexandrines excavations, although at a much lower volume of circulation and loss. This is to be expected, not only because the population (and so amount of coin) was undoubtedly lower at 'Ain el-Gedida, but the total volume excavated was also substantially less. The divergence between the two frequency trends after Period 7 is noteworthy and significant: whereas Period 7 (348–364) is the highpoint at 'Ain el-Gedida, it is Periods 8 (364–378) and 10

5. Casey 1986: 68–113.

6. Marcellesi 2012: 266; cf. Bowen 2010a: 458.

7. Marcellesi 2012: 266–77 and fig. 13, p. 289.

(383–403) in Alexandria.⁸ Variations on the Alexandrian pattern are seen elsewhere in the Nile Valley and at Abu Mina, yet sites in Dakhla, Bahariya, and parts of the Fayyum all appear to tail off at the end of the fourth century.⁹ Indeed, no coin from 'Ain el-Gedida could be securely assigned to the fifth century.¹⁰ While there is little doubt that minting all over the Eastern Empire, including Egypt, declined in the fifth century,¹¹ the pattern at 'Ain el-Gedida more likely reflects a change in coin use (and loss) there and in the Dakhla Oasis more broadly at the end of the fourth century, perhaps due to abandonment or “ruralization” (or both). This interpretation is supported by the evidence of the ceramics, ostraka, and papyri recovered at 'Ain el-Gedida, Amheida, and Kellis (sections 7.1; 8; 10).

9.3. MINTS

Thirty of the coins dated or attributable to the fourth century retain traces sufficient to identify the mint to some degree of precision (Fig. 9.4 and Table 9.1). This represents approximately a third of the coins assigned to a period (30/88), or just about half (30/64), if one excludes possible imitations (section 9.4 below).

Given the small sample size and the number of illegible coins, one cannot put too much weight on this distribution. Yet the picture is a familiar one from elsewhere in Dakhla and Egypt, with a preponderance of Eastern mints, especially Heraclea and Thessalonica.¹² It is somewhat surprising that coins from the mint of Alexandria do not appear early on, much less predominate, as one would expect from finds elsewhere.¹³ It is also surprising to have no securely identified coins from Antioch, as it was an important mint that contributed substantially to the Egyptian coin pool. That said, several of the coins from the East (“E unc”) may well be from either Alexandria or Antioch. The relatively high number of coins from western mints (including one each from London [27] and Lyons [151]), and particularly Rome, in Period 3 (312–324) is similarly paralleled elsewhere in the Oases, Alexandria, and the East.¹⁴ After 330 there is only one coin securely attributed to the West, reflecting again what appears to be a larger trend in the coin pool of Egypt (Fig. 9.5)

8. Cf. Lichocka 2005: 303–4.

9. Bowen 2001a; Bowen 2010a; Van Heesch 2012: 122. Compare Abu Mina (Noeske 2000, I: 167–79; III, plates 33–34), Karanis (Noeske 2000, I: 190–91; III, plates 42, 47), and Oxyrhynchus (Noeske 2000, I: 191–92; III, plates 45). Some early fifth-century coins were discovered at Douch in the Kharga Oasis, which seems to have been abandoned somewhat later (Noeske 2000, II: 411–14; Bowen 2010a: 479).

10. This is also true of the coins studied thus far at Amheida and for those reported from the excavations at Kellis (Bowen 2010a). Sixth and seventh-century finds have been reported from elsewhere in Dakhla (Noeske 2000, II: 410).

11. Guest 2012. The Alexandrian mint shrunk to two *officinae* under Arcadius (Kent 1994: 41).

12. Generally: Bagnall 1985b: 51–52; Bowen 2001a; Marcellesi 2012: 277–78; cf. Noeske 2000, III: plates 92–102.

13. Cf. Bowen 2010a: 480–81.

14. Bowen 2010a: 480–81 (Kellis, Dakhla); Bowen 2016 ('Ain es-Sabil, Dakhla); Van Heesch 2012: 122 and inv. 23–25 (Bahariya); Marcellesi 2012 (Alexandria); and Buttrey et al. 1981 (Sardis).

Table 9.1: Distribution of mints at Ain el-Gedida by period, 296–457 (excluding imitations).

Period	Date	Total Coins	Ale	Ant	Cyz	Nic	Con	Her	The	Sir	E unc	Sis	Aqu	Rom	Tic	Arl	Lyo	Tri	Lon	W unc	E total	W total	Unc	TOTAL
2	296–312	0																			0	0	0	0
3	312–324	13						3	1		1			5	1		1		1		5	8	0	13
4	324–330	2							2												2	0	0	2
5	330–341	8	2				1				1			1							4	1	2	7
6	341–348	3									2										2	0	1	3
7	348–364	20	1							1	3										5	0	5	10
8	364–378	12	1																		1	0	5	6
9	378–383	0																			0	0	0	0
10	383–403	3	1						1												2	0	1	3
11	404–457	0																			0	0	0	0
2–10	4 C	14																			0	0	0	0
6–10	Second half of 4 c	5																			0	0	3	3
8–11	Late 4–5 c	8																			0	0	5	5
	TOTAL	88	5	0	0	0	1	3	4	1	7	0	0	6	1	0	1	0	1	0	21	9	34	64

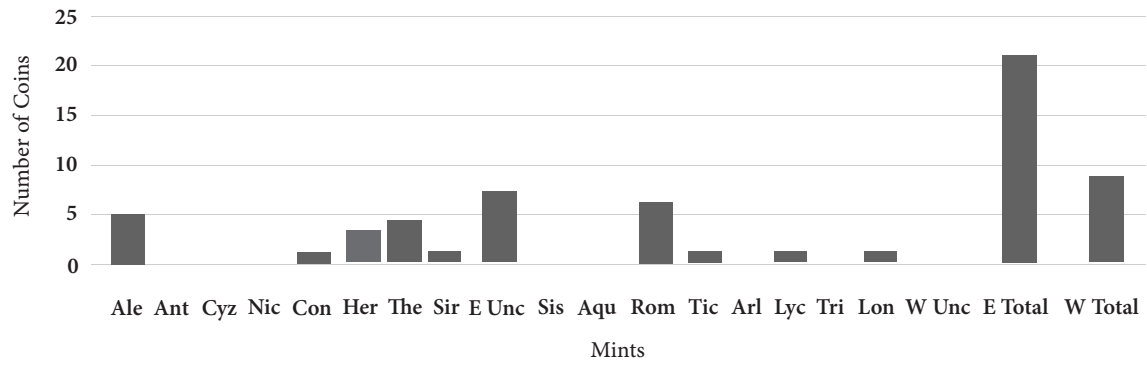


Fig. 9.4. Distribution of coins at Ain el-Gedida by mint from 296–457.

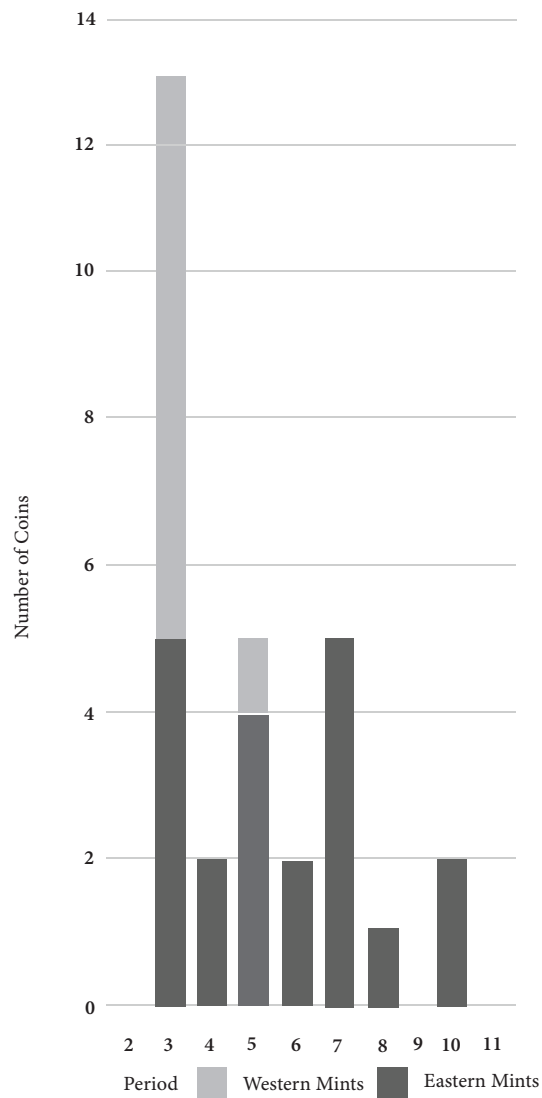


Fig. 9.5: Distribution of Eastern and Western mints at Ain el-Gedida, by period (296–457).

9.4. IMITATIONS

Despite Roman laws to the contrary, unofficial coinage (i.e., not struck at an imperial mint) circulated freely in fourth- and fifth-century Egypt.¹⁵ What precisely qualifies as an imitation or counterfeit is debated, partly because the identification of struck imitations is, at some level, subjective;¹⁶ and partly because both struck and cast imitations seem often to have been fabricated with some degree of tolerance, if not the tacit permission, of local authorities, calling into question precisely what it means to be a “forgery” or “counterfeit.”¹⁷ Generally speaking, imitations will exhibit poorly executed, erroneous, or stylistically divergent portraits, types, or legends, while cast coins will betray their production method by showing generation loss in the details, imperfections and reductions in the flan, and occasionally sprue stems from the casting process.¹⁸

We see evidence of both kinds of imitations at 'Ain el-Gedida. **106**, for example, is a coin cast from a mold modeled on an authentic *Spes reipublice* type and exhibiting the telltale nub of a residual sprue stem. Coins **104** and **125**, on the other hand, are small (ca. 9–10 mm, ca. 0.5 g); have crudely executed victories on the reverse, after the fashion of a *Securitas reipublicae* or *Salus reipublicae* type; and show obverse portraits that do not comport with official style. The obverse portrait of **104** is particularly noteworthy in this regard, as it is rendered in nearly three-quarters profile, turning toward the face of the coin, with very large eyes and an elongated head. The legend on the reverse, and perhaps what is supposed to be the mint mark in the exergue (unless it is the hem of the victory's dress), would seem to be bars or dots rather than letters.¹⁹

In her recent analysis of 1,535 fourth- and fifth-century coins from excavations in Alexandria, Marcellesi found that cast imitations first appear in the coin pool in large numbers after 330. They then grow as a percentage of the coin pool in each successive period until in Period 8 (364–378) they represent nearly 70% of specimens.²⁰ According to her research, nearly 90% of fifth-century coins are cast. High percentages of cast and other irregular coins have also been reported at other late antique and Byzantine sites in Egypt.²¹ Given that the coins of Kellis and 'Ain el-Gedida show every indication of following the general circulation patterns of Egypt, we should expect to find a substantial number of imitations at late antique sites in Dakhla.²²

I identified 25 likely or possible imitations (primarily cast) in the coins from 'Ain el-Gedida (Table 9.2). This represents approximately a quarter of the legible coins, though in fact most were from the second half of the fourth century. The most frequent types imitated were, predictably, the popular *Fel temp reparatio*, falling horseman (351–361) and Valentinian's *Securitas*

15. Grierson 1956; King 1996; Noekse 2000, I: 115.

16. Bastien 1985: 158; cf. the self-assurance (and contempt) of Milne 1926. See Noekse 2000, I: 116–17 for a critique of Milne's classification.

17. Gara 1978; King 1996; Barakat and Picard 2002; Carrié 2003: 194–95; Andrieux et al. 2005; Barakat 2005; and Noeske 2006: 357–58.

18. Milne 1926: 48–53; Noeske 2000, I: 117.

19. So-called “barbarous” imitations: Milne 1926: 50; cf. Hill 1950; Noeske 2000, I: 116–17.

20. Marcellesi 2012: 278–79 and fig. 12, p. 288.

21. E.g., Karanis and Abu Mina (Noeske 2000, I: 271–77; 2006: 276–78); Oxyrhynchus (Milne 1933: xv); Kom al-Dikka, Alexandria (Lichočka 2005).

22. Published notices of the presence of imitations in the oases: Hope, Kaper, and Bowen 1992: 48 (Kellis); Noeske 2000, II: 410 (Dakhla); Gascou et al. 1980: 336–37; Gautier 1981: 112; Noeske 2000, II: 412–14 (Douch, Kharga).

Table 9.2: Likely and possible imitations and cast coins recovered from 'Ain el-Gedida.

Catalog	Period	Emperor	Type	Mint
122	5	NA	GE, 1 standard	Heraclea or Nicomedia
8	7	NA	FTR, FH	NA
13	7	Gallus or Julian	FTR, FH	NA
19	7	NA	FTR, FH	NA
22	7	NA	FTR, FH	NA
44	7	Constantius	FTR, FH	NA
48	7	Constantius	FTR, FH	NA
65	7	Constantius	FTR, FH	NA
80	7	Constantius	FTR, FH	NA
89	7	Constantius	FTR, FH	NA
106	7	Constantius or Julian	<i>Spes Reip</i>	Heraclea, Nicomedia, or Cyzicus
135	7	NA	FTR, FH	NA
68	8	NA	<i>Sec Reip</i>	NA
73	8	Valens or Valentinian I	GR	NA
76	8	NA	<i>Sec Reip</i>	NA
77	8	NA	<i>Sec Reip</i>	NA
118	8	Gratian	<i>Sec Reip</i>	Alexandria
141	8	NA	<i>Sec Reip</i>	NA
57	4c	NA	?	NA
69	4c	NA	?	NA
88	late 4c	NA	<i>Sec Reip</i>	NA
104	late 4c–5c	NA	<i>Sec Reip?</i>	NA
125	late 4c–5c	NA	<i>Sal Reip?</i>	NA
134	late 4c	NA	<i>Sec Reip?</i>	NA
144	late 4c–5c	NA	?	NA

reipublicae (364–378).²³ The distribution and types of imitations comports well enough with the general consensus about imitations over the course of the fourth century in Egypt and with Marcellesi's recent work at Alexandria (Table 9.3).

The poor condition of the coins at 'Ain el-Gedida and the need to work from images together render the identification of imitations challenging. As a consequence, one cannot place much weight on the precise percentages in Table 9.3. Indeed, one should suspect that a healthy percentage of the illegible coins at 'Ain el-Gedida were cast. My aim here is merely to note that, in line with expectations, there are a good number of imitation or cast coins at 'Ain el-Gedida and likely elsewhere in Dakhla and Kharga.

23. Cf. Bastien 1982; Lichocka 2005: 304.

Table 9.3: Percentage of imitations per period at Āin el-Gedida and the excavations of the Centre d'Études Alexandrines (based on Marcellesi 2012: fig. 12).

Period	AG	CEAlex
2	0%	0%
3	0%	3%
4	0%	0%
5	13%	8%
6	0%	20%
7	55%	28%
8	50%	68%
9	0%	59%
10	0%	66%

9.5. ARCHAEOLOGICAL OBSERVATIONS

The six coins from area A (1–6) have no reliable archaeological context. The 146 coins from area B, on the other hand, were recovered through systematic archaeological excavation of strata of varying reliability in eighteen of the 24 rooms investigated (Table 9.4). Eighty-seven of these coins were dated.

The coins from area B of Āin el-Gedida are interesting from two archaeological perspectives. First, they are objects with a date stamp, and so useful in assigning absolute date points to the relative chronology established by stratigraphic excavation and analysis. Because coins circulate, however, they persist in use well after their initial minting, as demonstrated by the evidence of hoards. The date of minting therefore provides a *terminus post quem* for subsequent archaeological events or features. Hoards give us a sense of when coins drop out of circulation, and therefore suggest a useful, if fuzzier, *terminus ante quem* for prior events or features. The facts of circulation and hoarding bring us to the second archaeological perspective, or the archaeology of coins as a distinct class of cultural object. The disposition of coinage in an archaeological site is, from this perspective, a record of coin production and use. More precisely, the coins recovered in an archaeological site are a complex artifact of the phenomenon of coin handling and loss in a specific space during specific periods.²⁴

Table 9.5 shows the distribution of coins in area B by room and DSU or FSU. The table displays the number of dated coins and imitations found in each context. The dated coins establish a *terminus post quem* for the unit and those above it. I have also calculated an approximate volume for each unit in order to arrive at a coin density, or the number of coins found per cubic meter in a given unit. Just as a frequency facilitates comparison of relative output of coinage from period to period (section 9.2 above), so a density facilitates comparison between stratigraphic units of varying sizes and depths. However, densities (frequencies, or normalized volumes) of coin (per 1000) are most useful when one has a baseline for comparison. For example, the west complex on mound I at the occupational levels has a density of approximately

24. See, in general, for this section: Casey 1986 and Reece 2003, esp. chs. 12 and 13.

Table 9.4: Distributions of coins at 'Ain el-Gedida by room in area B.

Room	Total Coins	Dated Coins
4	1	0
5	36	28
6	2	2
8	1	1
9	1	1
10	1	1
11	15	6
12	33	20
13	17	4
14	6	4
15	16	9
17	3	1
18	2	0
19	7	6
20	1	0
21	1	1
23	2	2
24	1	1
Total	146	87

0.9 coins/m³. Is this a lot or a little? Is it typical of this sort of space in late antique Dakhla? Such questions can only be answered once we have a large enough sample of densities and coin lists. All this is by way of saying that the densities here are of limited use. Indeed, one might say that their meaning is latent and will only become clear as more contexts and their coin lists are published.

A quick glance at the two tables in this section reveals that coin loss was not evenly distributed across the areas excavated at 'Ain el-Gedida. Rooms B1–B3, which have been interpreted as a likely domestic context, did not yield a single coin in approximately 70–80 m³ of excavated material. To put this into perspective, B5, one of the main rooms of the church, contained a similar volume of material but yielded 36 coins. One coin was recovered in B4, but this was a surface find in a context that seems not to be original to the room, which was used as a midden in its final phase. The ceramic assemblage and ostraca finds in B1–B3 (section 2.3.1) suggest that it had a fourth-century phase, and certainly late antique domestic contexts from Kellis and Amheida have yielded coins. However, the building of which B1–B3 are a part has not been fully excavated; we may therefore draw no conclusions about coin use and loss in this area until that point.

The west complex on mound I (B17–B24) has been interpreted as a temple that had been converted into a pottery workshop sometime around the fourth century (section 6.7). The entire complex yielded 17 coins. Eleven, however, come from surface or ancient abandonment

Table 9.5: Coin distribution in area B by room and DSU/FSU.

Room	DSU	Context	Coins	Dated	Imitations	Catalog	TPQ	Approx. SU Vol. (m ³)	Density (coins/m ³)
4	Surface	surface	1	0	0	7	NA	NA	NA
5	Surface	surface	3	1	1	8–10	NA	NA	NA
	20	windblown sand	1	1	0	11	NA	16.7	0.1
	22	wall and ceiling collapse	1	1	0	12	324	6.5	0.2
	23	wall and ceiling collapse	1	1	1	13	351	0.9	1.2
	24	collapse?	4	3	0	14–17	341	NA	NA
	26	pit fill	4	4	1	18–21	351	0.9	4.3
	28	windblown sand	3	2	1	22–24	351	3.6	0.8
	29	ceiling collapse	4	3	0	25–28	351	0.8	5.2
	32	excavation debris from ancient pit	10	9	0	29–38	351	0.4	25.5
	33	room fill	2	1	0	39–40	NA	0.4	5.0
	35	room fill/ occupational	1	1	0	41	317	2.5	0.4
41	preparation level below floor	1	0	0	42	NA	NA	NA	
43	pit fill	1	1	0	43	335	1.1	0.9	
6	59	occupational	1	1	1	44	351	1.8	0.6
	F83	floor	1	1	0	45	361	0.2	5.0
8	44	surface	1	1	0	46	364	3.2	0.3
9	79	occupational	1	1	0	47	NA	1.0	1.0
10	76	windblown sand under collapse	1	1	1	48	351	24.6	0.04
11	90	refuse/occupational layer above floor	10	4	1	49–58	383	16.0	0.6

Room	DSU	Context	Coins	Dated	Imitations	Catalog	TPQ	Approx. SU Vol. (m ³)	Density (coins/m ³)
11	97	uncertain ash layer	2	1	0	59-60	NA	1.8	1.1
	108	uncertain ash layer above floor	2	0	0	61-62	NA	1.6	1.3
	F141	floor	1	1	0	63	320	NA	NA
12	91	occupational	8	5	3	64-71	364	8.6	0.9
	93	preparation level below floor	5	2	2	72-76	364	5.6	0.9
	95	preparation level below floor	3	2	1	77-79	364	2.2	1.3
	96	foundation trench fill	3	2	1	80-82	361	1.2	2.5
	101	level beneath F155	1	1	0	83	363	0.5	2.2
	107	wall collapse	3	2	0	84-86	355	13.5	0.2
	124	occupational	9	6	2	87-95	364	5.1	1.8
	F135	floor	1	0	0	96	NA	NA	NA
13	94	refuse layer	2	1	0	97-98	341	4.9	0.4
	104	windblown sand	1	0	0	99	NA	14.1	0.1
	105	collapse	2	0	0	100-101	NA	2.4	0.8
	109	layer between collapses	3	1	1	102-104	364	5.0	0.6
	110	refuse layer	4	1	1	105-108	355	2.9	1.4
	115	occupational	3	1	0	109-111	NA	4.7	0.6
	F152	floor	1	0	0	112	NA	NA	NA
	F153	floor	1	0	0	113	NA	NA	NA
14	84	surface	1	1	0	114	317	9.2	0.1
	127	refuse layer	5	3	1	115-119	367	2.0	2.5
15	86	wall collapse	3	1	1	120-122	335	28.5	0.1
	129	refuse layer	6	3	1	123-128	364	3.7	1.6
	132	refuse/preparation level below floor	4	2	0	129-132	NA	1.8	2.2

Room	DSU	Context	Coins	Dated	Imitations	Catalog	TPQ	Approx. SU Vol. (m ³)	Density (coins/m ³)
	137	refuse/preparation level below floor	3	3	2	133–135	383	NA	NA
17	152	windblown sand	3	1	0	136–138	364	1.7	1.7
18	156	occupational	2	0	0	139–140	NA	2.0	1.0
19	171	windblown sand	2	2	1	141–142	383	1.5	1.3
	173	vault/wall collapse	4	3	1	143–146	337	1.9	2.1
	F180	wall	1	1	0	147	NA	NA	NA
20	143	occupational	1	0	0	148	NA	1.5	0.7
21	138	surface	1	1	0	149	328	21.2	0.1
23	147	occupational	2	2	0	150–151	316	2.0	1.0
24	151	windblown sand/occupational	1	1	0	152	364	0.3	3.8

or post-abandonment layers (B17: DSU152; B19: DSU171, 173; B21: DSU138; B24: DSU174). Thus four rooms yielded five coins from units associated with the final occupation phase of the west complex (B1: DSU156; B19: BF180; B20: DSU143; and B23: DSU147). Regrettably, coins 139–140 from DSU156 were not fully cleaned. 147 is an odd specimen, curiously heavy for its module. It retains traces that clearly date it to the fourth century, but I have yet to succeed in identifying it more precisely. 148 from DSU143 is illegible. Thankfully, both of the coins in DSU147 and the occupational level just above the floor BF183 in B23, are legible *Soli invicto comiti* types (150–151). Hoard evidence suggests that these types were no longer circulating by sometime in the 330s, making that decade the latest likely date for the laying of floor BF183.²⁵

The other main excavated area at Āin el-Gedida includes a church complex and several surrounding spaces (B5–B15). 128 coins were recovered from this complex of rooms and passageways. Approximately forty percent (51) were discovered in surface, abandonment, or post-abandonment layers (B5: surface, DSU20, 22, 23, 24, 28, 29, 33; B8: DSU44; B10, DSU76; B13: DSU94, 104, 105, 109, 110; B14: DSU84, 127; B15: DSU86, 129). Rooms B14 and B15 postdate the conversion of B5 and A46 into an apsidal church, encroaching upon and transforming the street B12 (section 5.1) in order to accommodate a bakery. The only coins discovered in the pre-

25. Bowen 2012c: 423.

abandonment layers of this part of the site are **129–132** in DSU₁₃₂ and **133–135** in DSU₁₃₇. DSU₁₃₂ lay below the most recent floor BF₁₇₄ and while DSU₁₃₇ was above floor BF₁₇₅, which belongs to the period in which the ovens were active. None of the coins in DSU₁₃₂ provide a secure *terminus post quem* for the floor above, though all are likely from the later half of the fourth century or early fifth century. At least two, and perhaps all three, of the coins in DSU₁₃₇ are cast imitations of types that circulated in the last three decades of the fourth century. **133** is a *Salus reipublicae* type, suggesting that the layers above it were deposited after 383.

B₁₁–B₁₃ were streets and passageways that predated the conversion of B₅ into a church and were subsequently modified in order to accommodate the transformation of the church complex (section 5.1). In B₁₂ there were a series of floors, with earlier ones connected to the alteration of B₅ and subsequent ones associated with the construction of B₁₄–B₁₅ to the east. Two early strata produced one coin each: BF₁₃₅, an early floor; and DSU₁₀₁, a preparation layer for another early floor (BF₁₅₅). One of these coins was not fully cleaned (**96**). The other coin (**83**) is a votive issue of Jovian dated to 363–364. This implies that the subsequent phases of B₁₂ should be dated to after 363. In B₁₁ coin **63**, minted in 320–321, was discovered embedded in the lowest floor (BF₁₄₁). Hoard evidence suggests that this coin was no longer in circulation by 340, again suggesting a rough *terminus ante quem* for the floor.²⁶ Unfortunately, the coins in the earliest levels of B₁₃ were either not fully cleaned or are otherwise illegible.

In the church complex itself (B₅–B₉) three rooms produced coins: B₅, B₆, and B₉ (the coin find in B₈ is post-abandonment). B₆–B₉ were built simultaneously (section 5.1) and produced only four coins. The coin in B₉ is illegible. B₆ produced two coins: **44** in DSU₅₉, an occupational layer above floor BF₈₃, in which **45** was embedded. The former is a *Fel temp reparatio* type (351–361) and the latter a votive coin of Julian (361–363). B₅ has two coins in early layers: **41** in DSU₃₅ and **42** in DSU₄₁, the preparation layer for the floor. **42** is illegible; **41** was minted in 317 and was unlikely to be circulating actively by 330.²⁷ B₅ also contains numerous pits (section 3.1.1). The fill of one (DSU₄₃) contained a single coin (**43**), a *Gloria exercitus* type dated to 335–337 and in the coin pool until sometime in the 360s. DSU₃₂ has also been related to ancient digging activity. This small unit not only produced 10 coins (density 25.5), but also produced the only coins excavated from 'Ain el-Gedida thus far that pre-date Diocletian's reform (**29–30**, **33–34**, **38**). These late third-century tetradrachms were discovered with coins from the fourth century, including a *Fel temp reparatio* type. It is hard to know what to make of such a deposit. Late third-century tetradrachms have been found in the churches at Kellis, and Bowen has argued that they suggest their continued circulation well after Diocletian's currency reform.²⁸

We thus have three contexts with three distinct numismatic profiles. B₁–B₄ yielded no coins in the historical layers. The west complex (B₁₇–B₂₄) produced 17 coins, but an average density of 0.9/m³ for occupation layers.²⁹ Temple sites and churches, on the other hand, are often productive of coins, the result of a combination of intentional donation, commercial activity, and loss (see the discussion of B₅ immediately below). The numismatic profile of the west complex would, therefore, seem to be that of its latest phase as a workshop. By way of com-

26. *Idem.*

27. *Idem.*

28. Bowen 2010a; 2012c.

29. I exclude **147**, since it was embedded in a wall.

parison, the admittedly larger temple mound at Amheida has yielded not only far more coins from the fourth century, but also a substantial hoard of first- and second-century tetradrachms, whereas second-century tetradrachms and even money boxes (empty) have been discovered in the temple of Tutu at Kellis.³⁰ While this may reflect a difference in coin use and loss in the west complex, it may also reflect the extent of erosion and deflation in this area, which affected both the strata of the earlier temple and the subsequent workshops.³¹

Rooms B14–B15 produced 22 coins and had units that ranged in density from 1.6–2.5/m³. Although streets B11–B12 and courtyard/intersection B13 produced 36 coins—double the number from the west complex—the layers with the greatest number of coins, DSU90 and DSU91, in fact had relatively low densities for the site (0.6 and 0.9, respectively). Densities in the refuse and occupational layers ranged from approximately 1.0–2.5, resembling the west complex at one end of the spectrum (if we may take them as diagnostic), and certain layers in B14–B15 at the other. Finally, in the church complex itself, there were several rooms with few or no coins (B6–B9; density equal to or less than 1.0), as contrasted with B5 itself, in which we find the greatest coin densities at the site so far. We might explain the difference with how people may have used and lost or did not lose coins in passageways, access points, pantries, or kitchens, as B6–B9 have been interpreted,³² as opposed to the church itself, where one might expect donations (if not other activities) to lead to various types of loss. However, it will take more excavation and quantifying and mapping of coin loss in order to build up a meaningful typology of coin loss in different contexts in Dakhla.

9.6. CATALOGUE

The catalogue is organized by archaeological area, room, and stratigraphic unit or feature. Restored features are represented in square brackets ([...]). “NA” signals when information is not available; “ND” signifies “No Date”. All coins are scaled at 2:1.

Abbreviations

FTR, FH = *Fel temp reparatio*, falling horseman series

D. = G. Dattari (1901). *Monete imperiali greche. Numi Augg. Alexandrini*. Cairo.

G. = A. Geissen (1974–83). *Katalog Alexandrinischer Kaisermünzen der Sammlung des Instituts für Altertumskunde der Universität zu Köln* (Papyrologica Coloniensia V). 5 vols. Opladen: Westdeutscher Verlag. (Vol. 4 in collaboration with W. Weiser).

L = left

M. = J. G. Milne (1933). *Catalogue of Alexandrian Coins*. Oxford: Oxford University Press. Reprinted 1971 (London: Spink).

R = right

RIC = H. G. Mattingly et al., eds. (1923–1944). *Roman Imperial Coinage*. London: Spink. P.

30. Amheida: Faucher 2015; Kellis: Hope 1991: 47–48, Hope, Kaper, and Bowen 1992: 47–48, Bowen, Hope, and Kaper 1993: 27, Hope 1995: 52–55, Hope 2001a: 42 (money boxes in the shape of Egyptian temples).

31. See chapter 6 in this volume.

32. See sections 3.1.3–6 in this volume.

M. Bruun, *VII: Constantine and Licinius: A.D. 313–337* (1996). J. P. C. Kent, *VIII: The family of Constantine I: A.D. 337–364* (1981). J. W. E. Pearce, *IX: Valentinian I–Theodosius I* (1951).

Sal Reip = *Salus reipublicae*

Sec Reip = *Securitas reipublicae*

1

Inventory Number: 1

Context: Area A, room A41, surface clearance (FN1)

Material: AE *Diam.:* 23 mm *Weight:* 3.0 g *Axis:* 6h

Module/Denom.: AE3/Nummus

Obv.: Imp. bust, R; laureate. *Legend:* IM[P] LIC LICINIUS [P F AU]G

Rev.: Jupiter Conservator, standing. L, with globe and victory, leaning on scepter. Eagle with wreath to L on ground. *Legend:* IOVI CONSE-R[VATORI] AUGG

Mint: Thessalonica *Mint Mark:* -/ -//● T S [●] A ● (Final letter may also be B)

Date: 313–316 *Ref.:* RIC VII Thessalonica 2

Image Ref. to the Database: OBV: 0001-AG06--0014; REV: 0001-AG06--0012

2

Inventory Number: 2

Context: Area A, room A41, surface clearance (FN2)

Material: AE *Diam.:* 22 mm *Weight:* 3.3 g *Axis:* 6h

Module/Denom.: AE3/Nummus

Obv.: Imp. bust, R; laureate, cuirassed. *Legend:* IMP [LICI]NIUS P F AUG

Rev.: Sol, radiate, standing L, globe in L, raising R hand, chlamys across L shoulder. *Legend:* SOLI INV-I-CTO COMITI

Mint: Rome *Mint Mark:* (R on X)/F//RP

Date: 314–315 *Ref.:* RIC VII Rome 30

Image ref. to the database: OBV: 0002-AG06--0011; REV: 0002-AG06--0010

3

Inventory Number: 501

Context: Area A, room A25, surface clearance (FN1)

Material: AE *Diam.:* 20 mm *Weight:* 1.8 g *Axis:* 12h

Module/Denom.: AE3/Nummus

Obv.: Imp. bust, R. *Legend:* CONSTA[N-TIN]US AUG

Rev.: Votive wreath, inscribed VOT / X X. *Legend:* D N CONSTANTINI MAX AUG

Mint: Heraclea *Mint Mark:* *//SMHB

Date: 324 *Ref.:* RIC VII Heraclea 60

Image Ref. to the Database: OBV: 0501-AG07--0169; REV: 0501-AG07--0056

4

Inventory Number: 502

Context: Area A, room A25, surface clearance (FN2)

Material: AE *Diam.:* 19 mm *Weight:* 2.2 g *Axis:* 6h
Module/Denom.: AE3/Nummus
Obv.: Imp. bust, R; cuirassed, draped(?), laureate. *Legend:* IUL CRIS-PUS NOB C
Rev.: Camp gate, no doors, two turrets, star in between. *Legend:* PROVIDEN-TIAE CAESS
Mint: Thessalonica *Mint Mark:* SMTS . (*officina* illegible)
Date: 326 *Ref.:* RIC VII Thessalonica 155
Image Ref. to the Database: OBV: 0502-AG10-3059; REV: 0502-AG10-3060

5

Inventory Number: 503
Context: Area A, room A25, DSU1
Material: AE *Diam.:* 21 mm *Weight:* NA *Axis:* 12h
Module/Denom.: AE3/Nummus
Obv.: Imp. bust, R; head only, laureate. *Legend:* IMP CONSTANTINUS PF AUG
Rev.: Sol, radiate, stg. L, facing L, R arm raised, chlamys over L shoulder. *Legend:* SOL[I IN VI] CTO COM[ITI] (breaks not legible)
Mint: Rome *Mint Mark:* R/[F]//RS
Date: 313 *Ref.:* RIC VII Rome 1
Image Ref. to the Database: OBV: 0503-AG07--0173; REV: 0503-AG07--0174

6

Inventory Number: 504
Context: Area A, room A25, DSU1 (FN7)
Material: AE *Diam.:* 22 mm *Weight:* NA *Axis:* 12h
Module/Denom.: AE3/Nummus
Obv.: Imp. bust, R; headdress uncertain: diadem? *Legend:* [I]M[P] CONSTANTINUS P F A[UG]
Rev.: Sol, radiate, standing L, chlamys over L arm; other attributes obscure. *Legend:* SOLI IN - VI - CTO COMITI
Mint: Rome *Mint Mark:* C or (wreath)/?//RT
Date: 315–318 *Ref.:* RIC VII Rome 39-41 or 97 var
Note: Variant of RIC 7 Rome 39-41 or 97, depending on the mint mark in the field. Variants of this type with respect to the break of the reverse legend are fairly common. Recorded weight to be checked
Image Ref. to the Database: OBV: 0504-AG07--0058; REV: 0504-AG07--0057

7

Inventory Number: 548
Context: Area B, room B4, surface
Material: AE *Diam.:* 10 mm *Weight:* 0.5 g *Axis:* NA
Module/Denom.: NA
Condition: Illegible
Date: ND

8*Inventory Number:* 545*Context:* Area B, room B5, surface*Material:* AE *Diam.:* 14 mm *Weight:* 1.7 g *Axis:* 2h*Module/Denom.:* AE3/*Maiorina**Obv.:* Imp. bust, R; diadem. No trace of legend. Portrait seems elongated*Rev.:* Traces of legend along left. *FTR*, FH type, but a very tight composition*Mint:* NA *Mint Mark:* illegible*Date:* 355–361 *Ref.:* NA*Note:* Axis is approximately 2h. Likely an imitation*Image Ref. to the Database:* OBV: 00545-AG10--3069; REV: 00545-AG10--3070)**9***Inventory Number:* 546*Context:* Area B, room B5, surface*Material:* AE *Diam.:* 12 mm *Weight:* 0.7 g *Axis:* NA*Module/Denom.:* NA*Condition:* Illegible*Date:* ND**10***Inventory Number:* 547*Context:* Area B; room B5 surface*Material:* AE *Diam.:* 13 mm *Weight:* 0.6 g *Axis:* NA*Module/Denom.:* NA*Condition:* Illegible, fragmentary*Date:* ND**11***Inventory Number:* 33*Context:* Area B, room B5, DSU20 (FN15)*Material:* AE *Diam.:* 21 mm *Weight:* 1.2 g *Axis:* NA*Module/Denom.:* AE3*Obv.:* Traces of imp. bust, R; diadem. *Legend:* D [N ...]?*Rev.:* Traces of legend and design*Condition:* Fragmentary*Mint:* NA *Mint Mark:* illegible*Date:* 4th c. *Ref.:* NA**12***Inventory Number:* 32*Context:* Area B, room B5, DSU22, FN20

Material: AE *Diam.:* 19 mm *Weight:* 2.0 g *Axis:* NA
Module/Denom.: AE3/Nummus
Obv.: Imp. bust, R; laureate. *Legend:* CONSTAN-TINUS AUG
Rev.: Votive wreath, inscribed: VOT ● XX. *Legend:* D N CONSTANTINI MAX AUG
Mint: Heraclea *Mint Mark:* *//SHMA
Date: 324 *Ref.:* RIC VII Heraclea 60
Image Ref. to the Database: OBV: 00032-AG10--3041; REV: 00032-AG10--3042

13

Inventory Number: 29
Context: Area B, room B5, DSU23 (FN17)
Material: AE *Diam.:* 17 mm *Weight:* 2.3 g *Axis:* 12h
Module/Denom.: AE3/Maiorina
Obv.: Imp. bust, R; cuirassed, draped, diadem. *Legend:* [...] ... CAES
Rev.: Traces of FTR, FH design. *Legend:* [FE]L TEMP R[E – PARATIO]
Mint: NA *Mint Mark:* illegible
Date: 351–361 *Ref.:* NA
Note: Portrait is either Gallus or Julian. Possibly an imitation
Image Ref. to the Database: OBV: 0029-AG06--0031; REV: 0029-AG06--0030

14

Inventory Number: 30
Context: Area B, room B5, DSU24 (FN18)
Material: AE *Diam.:* 18 mm *Weight:* 2.2 g *Axis:* NA
Module/Denom.: AE3
Condition: Illegible
Date: ND

15

Inventory Number: 31
Context: Area B, room B5, DSU24 (FN19)
Material: AE *Diam.:* 17 mm *Weight:* 1.5 g *Axis:* 12h
Module/Denom.: AE3/Centenionalis?
Obv.: Traces of imp. bust, R. Traces of legend
Rev.: Votive wreath, number of *vota* inscribed illegible
Mint: NA *Mint Mark:* illegible
Date: 341–364 *Ref.:* NA
Image Ref. to the Database: OBV: 0031-AG06--0020; REV: 0031-AG06--0019

16

Inventory Number: 34
Context: Area B, room B5, DSU24 (FN22)

Material: AE *Diam.:* 18 mm *Weight:* 3.5 g *Axis:* NA
Module/Denom.: AE2/AE3
Condition: Illegible
Date: ND

17

Inventory Number: 522
Context: Area B, room B5, DSU24 (FN19)
Material: AE *Diam.:* 17 mm *Weight:* 1.8 g *Axis:* NA
Module/Denom.: AE3
Obv.: Traces of imp. bust, R, cuirassed, draped, and legend
Rev.: NA
Mint: NA *Mint Mark:* illegible
Date: 4th c. *Ref.:* NA

18

Inventory Number: 520
Context: Area B, room B5, DSU26 (FN17)
Material: AE *Diam.:* 22 mm *Weight:* NA *Axis:* 6h
Module/Denom.: AE2/AE3/Maiorina
Obv.: Imp. bust, R. *Legend:* [D N CONS]T[AN] - TIUS P F AUG
Rev.: FTR, FH type. *Legend:* [FEL TEMP REPA]RATIO
Mint: NA *Mint Mark:* illegible
Date: 351–361 *Ref.:* NA
Note: Recorded weight to be checked

19

Inventory Number: 521
Context: Area B, room B5, DSU26 (FN18)
Material: AE *Diam.:* 17 mm *Weight:* 2.8 g *Axis:* 12h
Module/Denom.: AE3/Maiorina
Obv.: Imp. bust, R; diadem. Traces of legend L
Rev.: Type uncertain. *Legend:* [FEL TEMP RE]PARATIO
Mint: NA *Mint Mark:* Illegible
Date: 351–361 *Ref.:* NA
Note: Perhaps an imitation and/or cast
Image Ref. to the Database: OBV: 00521-AG10--3064; REV: 00521-AG10--3063

20

Inventory Number: 523
Context: Area B, room B5, DSU26 (FN20)
Material: AE *Diam.:* 17 mm *Weight:* 0.6 g *Axis:* 11h

Module/Denom.: AE4/*Nummus centenionalis?*

Obv.: Imp. bust, R; cuirassed, draped, diadem. Traces of legend

Rev.: Two soldiers, with spears, single standard between them. *Legend:* [GL]OR – [IA EXER]
C – ITUS

Mint: NA *Mint Mark:* illegible

Date: 335–341 *Ref.:* NA

21

Inventory Number: 562

Context: Area B, room B5, DSU26 (FN27)

Material: AE *Diam.:* 14 mm *Weight:* 1.8 g *Axis:* 12h

Module/Denom.: AE4/*Nummus centenionalis*

Obv.: Imp. bust, R; head only, pearl diadem. *Legend:* D N CONSTAN – [TIUS P F A]UG

Rev.: Votive wreath, inscribed: VOT / X X / MULT / X X X

Mint: NA *Mint Mark:* illegible

Date: 347–348 *Ref.:* NA

Note: Minted by all eastern mints, from Heraclea to Alexandria, with the possible exception of Constantinople

Image Ref. to the Database: OBV: 00562-AG10--3021; REV: 00562-AG10--3022

22

Inventory Number: 526

Context: Area B, room B5, DSU28 (in sand below brick collapse)

Material: AE *Diam.:* 16 mm *Weight:* 1.6 g *Axis:* 6h

Module/Denom.: AE3/*Maiorina*

Obv.: Imp. bust, R; diadem. *Legend:* [D N] CON[...]

Rev.: Traces of *FTR*, *FH* type. *Legend:* FEL TEMP [REPARATIO]

Mint: NA *Mint Mark:* illegible

Date: 351–361 *Ref.:* NA

Note: Possibly an imitation

23

Inventory Number: 527

Context: Area B, room B5, DSU28 (from sand layer beneath brick collapse)

Material: AE *Diam.:* 15 mm *Weight:* 0.8 g *Axis:* NA

Module/Denom.: NA

Condition: Illegible (not fully cleaned)

Date: ND

24

Inventory Number: 528

Context: Area B, room B5, DSU28 (from sand layer beneath brick collapse)

Material: AE *Diam.:* 13 mm *Weight:* 1.6 g *Axis:* NA
Module/Denom.: AE3/Maiorina
Obv.: Illegible
Rev.: Traces of design and legend consistent with *FTR*, FH type
Mint: NA *Mint Mark:* illegible
Date: 351–361 *Ref.:* NA
Note: Not fully cleaned

25

Inventory Number: 505
Context: Area B, room B5, DSU29 (FN2)
Material: AE *Diam.:* 18 mm *Weight:* 3.7 g *Axis:* 12h
Module/Denom.: AE3/Maiorina
Obv.: Imp. bust, R; cuirassed, draped, no diadem. *Legend:* D N CONSTANTI - [US ... CAES]
Rev.: *FTR*, FH with traces of legend
Mint: Antioch, Thessalonica, or Alexandria *Mint Mark:* L?//traces
Date: 351–361 *Ref.:* NA
Image Ref. to the Database: OBV: 0505-AG07--0051; REV: 0505-AG07--0052

26

Inventory Number: 506
Context: Area B, room B5, DSU29 (FN3)
Material: AE *Diam.:* 16 mm *Weight:* 0.9 g *Axis:* 10h?
Module/Denom.: AE3/Nummus centenionalis?
Obv.: Bust of Constantinople, L; helmeted, scepter over L shoulder. *Legend:* CONSTAN – TINOPOLIS
Rev.: Victory L; R foot on prow, L hand on shield. No legend
Mint: Alexandria *Mint Mark:* -/-//SMALA•
Date: 340–347(?) *Ref.:* RIC VIII Alexandria 27
Note: There is some uncertainty as to when this issue came to an end. Cf. Marcellesi 2012: 433; RIC VII, p. 535
Image Ref. to the Database: OBV: 0506-AG07--0053; REV: 0506-AG07--0180

27

Inventory Number: 507
Context: Area B, room B5, DSU29 (FN4)
Material: AE *Diam.:* 19 mm *Weight:* 2.8 g *Axis:* 12h?
Module/Denom.: AE3/Nummus
Obv.: Imp. bust, L; radiate, draped, cuirassed. *Legend:* CONSTANTI - NUS IUN N C
Rev.: Altar with globe, inscribed VO / TIS / X X (reverse break usually VOT / IS). Three stars above. *Legend:* BEAT TRA – NQLITAS
Mint: London *Mint Mark:* F/B//[PLON]

Date: 322–323

Ref.: RIC VII London 255 var

Image Ref. to the Database: OBV: 00507-AG10--3045; REV: 00507-AG10--3046



Pl. 9.1a–b: Obverse and reverse of coin-inv. 507.

28

Inventory Number: 508

Context: Area B, room B5, DSU29 (FN5)

Material: AE

Diam.: 14 mm

Weight: 1.0 g

Axis: NA

Module/Denom.: NA

Condition: Illegible (not fully cleaned)

Date: ND

29

Inventory Number: 509

Context: Area B, room B5, DSU32 (FN6)

Material: Bi

Diam.: 19 mm

Weight: 7.1 g

Axis: 12h

Module/Denom.: Tetradrachm

Obv.: Imp. bust, R; laureate, wreath ties back. Legend: [...] IANOC CEB

Rev.: Alexandria in mural crown facing L, holding staff or scepter in L hand and head of Serapis in R

Mint: Alexandria Mint Mark: LB (= Year 2)

Date: 271/272 Aurelian, Year 2

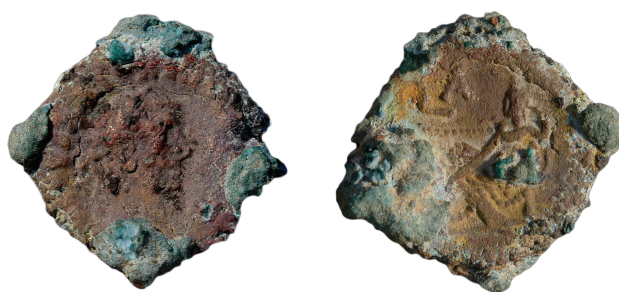
Ref.: D. 5435; M. 4355

285/286 Diocletian, Year 2 Ref.: D. 5622; M. 4781; G. 3210

Image Ref. to the Database: OBV: 0509-AG07--0184; REV: 0509-AG07--0185



Pl. 9.2a–b: Obverse and reverse of coin-inv. 509.

30*Inventory Number:* 510*Context:* Area B, room B5, DSU32 (FN7)*Material:* Bi *Diam.:* 20 mm *Weight:* 7.0 g *Axis:* 12h*Module/Denom.:* Tetradrachm*Obv.:* Imp. bust, R; laureate. *Legend:* Α Κ Γ ΟΥΑΛ ΔΙΟΚΛΗΤ[ΙΑΝΟC CEB]*Rev.:* Tyche, reclining on a couch; R hand on rudder*Mint:* Alexandria *Mint Mark:* LA (= Year 1)*Date:* 284–285 *Ref.:* D.5766; M.4756; G.3208*Image Ref. to the Database:* OBV: 0510-AG07--0149; REV: 0510-AG07--0068

Pl. 9.3a–b: Obverse and reverse of coin-inv. 510.

31*Inventory Number:* 511*Context:* Area B, room B5, DSU32 (FN8)*Material:* AE *Diam.:* 17 mm *Weight:* 1.8 g *Axis:* NA*Module/Denom.:* AE3/Maiorina*Obv.:* Illegible*Rev.:* Traces of FTR, FH*Mint:* NA *Mint Mark:* illegible*Date:* 351–361 *Ref.:* NA**32***Inventory Number:* 512*Context:* Area B, room B5, DSU32 (FN9)*Material:* AE *Diam.:* 20 mm *Weight:* 2.9 g *Axis:* 6h*Module/Denom.:* AE3/Nummus*Obv.:* Imp. bust, R; diadem, draped, cuirassed. *Legend:* IMP CONSTANTINUS P [F AUG]*Rev.:* Sol, radiate, standing L; chlamys over L arm, R arm upraised with victory, L arm with globe. *Legend:* SOLI IN - VI - CTO COMITI*Mint:* Rome *Mint Mark:* (T in wreath)/-//RQ*Date:* 318 *Ref.:* RIC VII Rome 136*Image Ref. to the Database:* OBV: 0512-AG07--0188; REV: 0512-AG07--0189



Pl. 9.4a–b: Obverse and reverse of coin-inv. 512.

33*Inventory Number:* 513*Context:* Area B, room B5, DSU32 (FN10)*Material:* Bi *Diam.:* 19 mm *Weight:* 8.0 g *Axis:* 12h*Module/Denom.:* Tetradrachm*Obv.:* Imp. bust, R; laureate, draped. *Legend:* A K M A OYA MAEIMIANOC CEB*Rev.:* Elpis, standing L; flowers in R hand, L gathering chiton*Mint:* Alexandria *Mint Mark:* LB (= Year 2)*Date:* 286–287 Maximian, Year 2 *Ref.:* M.4814; G.3285*Image Ref. to the Database:* OBV: 0513-AG07--0190; REV: 0513-AG07--0191

Pl. 9.5a–b: Obverse and reverse of coin-inv. 513.

34*Inventory Number:* 514*Context:* Area B, room B5, DSU32 (FN11)*Material:* Bi *Diam.:* 20 mm *Weight:* 7.6 g *Axis:* 12h*Module/Denom.:* Tetradrachm*Obv.:* Imp. bust, R; laureate, draped. *Legend:* A K M A KA - PINOC CEB*Rev.:* Homonoia, double cornucopia in L; raising R hand*Mint:* Alexandria *Mint Mark:* ETOUC [Γ]*Date:* 284–285 Carinus, Year 3 *Ref.:* D.5586; M.4737; G.3185*Image Ref. to the Database:* OBV: 0514-AG07--0192; REV: 0514-AG07--0193



Pl. 9.6a–b: Obverse and reverse of coin-inv. 514.

35*Inventory Number:* 515*Context:* Area B, room B5, DSU32 (FN12)*Material:* AE *Diam.:* 16 mm *Weight:* 1.0 g *Axis:* NA*Module/Denom.:* AE3/AE4*Obv.:* Imp. bust, R; laureate or diadem; traces of legend*Rev.:* Perhaps traces of victory adv. L with wreath*Mint:* NA *Mint Mark:* illegible*Date:* Late 4th–5th c. *Ref.:* NA**36***Inventory Number:* 516*Context:* Area B, room B5, DSU32 (FN13)*Material:* AE *Diam.:* 20 mm *Weight:* 1.9 g *Axis:* 12h*Module/Denom.:* AE3/*Nummus centenionalis?**Obv.:* Imp. bust, R; rosette diadem, draped, cuirassed. *Legend:* CONSTANTI - NUS MAX AUG*Rev.:* Two soldiers with shields to ground, two standards between them. *Legend:* GLOR - IA EXERC - ITUS*Mint:* Rome *Mint Mark:* -//R(wreath)P*Date:* 333–335 *Ref.:* RIC VII Rome 350*Image Ref. to the Database:* OBV: 0516-AG07--0194; REV: 0516-AG07--0196

Pl. 9.7a–b: Obverse and reverse of coin-inv. 516.

37*Inventory Number:* 517*Context:* Area B, room B5, DSU32 (FN14)*Material:* AE *Diam.:* 16 mm *Weight:* 2.1 g *Axis:* NA*Module/Denom.:* NA*Condition:* Illegible (not fully cleaned)*Date:* ND**38***Inventory Number:* 518*Context:* Area B, room B5, DSU32 (FN15)*Material:* Bi *Diam.:* 21 mm *Weight:* 7.4 g *Axis:* 12h*Module/Denom.:* tetradrachm*Obv.:* Imp. bust, R; laureate, cloaked, cuirassed. *Legend:* AY K M AYP ΠΠ-OBOC CEB*Rev.:* Eagle, standing L, head R, with wreath in beak*Mint:* Alexandria *Mint Mark:* LE (= Year 5)*Date:* 279–280 Probus, Year 5 *Ref.:* D.5550; M.4606; G.3144*Image Ref. to the Database:* OBV: 00518-AG10--3053; REV: 00518-AG10--3054

Pl. 9.8a–b: obverse and reverse of coin-inv. 518.

39*Inventory Number:* 524*Context:* Area B, room B5, DSU33*Material:* AE *Diam.:* 13 mm *Weight:* 0.7 g *Axis:* NA*Module/Denom.:* AE4*Obv.:* Trace of imp. bust, R; diadem, perhaps legend on L*Rev.:* Illegible*Mint:* NA *Mint Mark:* illegible*Date:* Late 4th–5th c. *Ref.:* NA**40***Inventory Number:* 525*Context:* area B, room B5, DSU33

Material: AE *Diam.:* 13 mm *Weight:* 0.9 g *Axis:* NA
Module/Denom.: AE4
Condition: Illegible
Date: ND

41

Inventory Number: 550
Context: Area B, room B5, DSU35 (FN21)
Material: AE *Diam.:* 20 mm *Weight:* 2.2 g *Axis:* 6h
Module/Denom.: AE3/Nummus
Obv.: Traces of imp. bust. *Legend:* D N [...] NOB C or perhaps CAES
Rev.: Camp gate, three turrets. *Legend:* PRO[VIDEN]-TIAE CAES[S]
Mint: Heraclea *Mint Mark:* -/-/MHT . ?
Date: 317 *Ref.:* RIC VII Heraclea 18-27



Pl. 9.9a–b: obverse and reverse of coin-inv. 550.

42

Inventory Number: 519
Context: Area B, room B5, DSU41 (FN16)
Material: AE *Diam.:* 13 mm *Weight:* 1.5 g *Axis:* NA
Module/Denom.: AE4
Condition: Illegible
Date: ND

43

Inventory Number: 566
Context: Area B, Room B5, DSU43 (FN28)
Material: AE *Diam.:* 16 mm *Weight:* 1.1 g *Axis:* 12h
Module/Denom.: AE3/Nummus centenionalis?
Obv.: Imp. bust, R; roseate diadem, draped, cuirassed. *Legend:* CONSTANTI - NUS MAX [AUG]
Rev.: GE type with two soldiers with one standard. *Legend:* [GLOR]-IA E[XE]RC - ITUS
Mint: Alexandria *Mint Mark:* -/-/SMALA or -/-/SMALAΔ

Date: 335–337 Ref.: RIC VII Alexandria 65
 Image Ref. to the Database: OBV: 00566-AG10--3031; REV: 00566-AG10--3032



Pl. 9.10a–b: obverse and reverse of coin-inv. 566.

44

Inventory Number: 561
 Context: Area B, room B6, DSU59 (FN24)
 Material: AE Diam.: 17 mm Weight: 2.5 g Axis: 6h
 Module/Denom.: AE3/Maiorina
 Obv.: Imp. bust, R; pearl diadem, draped, cuirassed. Legend: D N CONSTAN - TIUS P F AU[G]
 Rev.: Traces of FTR, FH. Legend: [FEL TEMP RE-PAR]ATIO
 Mint: NA Mint Mark: illegible
 Date: 351–361 Ref.: NA
 Image Ref. to the Database: OBV: 0561-AG07--0215; REV: 0561-AG07--0216



Pl. 9.11a–b: obverse and reverse of coin-inv. 561.

45

Inventory Number: 563
 Context: Area B, room B6, FSU83 (FN26)
 Material: AE Diam.: 19 mm Weight: 2.0 g Axis: 6h
 Module/Denom.: AE3/Centenionalis?
 Obv.: Imp. bust, L; pearl diadem; helmeted, cuirassed, spear in R hand, shield in L hand. Legend:
 D N FL CL IULI - ANUS P F AUG
 Rev.: Votive wreath inscribed: VOT / X / MULT / X X
 Mint: Sirmium Mint Mark: -/ -//ASIRM
 Date: 361–363 Ref.: RIC VIII Sirmium 108
 Image Ref. to the Database: OBV: 0563-AG07--0219; REV: 0563-AG07--0221



Pl. 9.12a–b: obverse and reverse of coin-inv. 563.

46*Inventory Number:* 549*Context:* Area B, room B8, DSU44*Material:* AE *Diam.:* 15 mm *Weight:* 1.7 g *Axis:* 12h?*Module/Denom.:* AE3/*Centenionalis?**Obv.:* Imp. bust, R; diadem. *Legend:* ... P F AUG*Rev.:* Victory with wreath, adv. L. Traces of legend, compatible with *SecReip**Mint:* NA *Mint Mark:* illegible*Date:* 364–378 *Ref.:* NA*Image Ref. to the Database:* OBV: 0549-AG07--0213; REV: 0549-AG07--0214**47***Inventory Number:* 580*Context:* Area B, room B9, DSU79 (FN40)*Material:* AE *Diam.:* 16 mm *Weight:* 2.1 g *Axis:* NA*Module/Denom.:* AE3/*Maiorina?**Obv.:* Illegible*Rev.:* Traces suggestive of *FTR*, *FH**Mint:* NA *Mint Mark:* illegible*Date:* 4th c. *Ref.:* NA**48***Inventory Number:* 589*Context:* Area B, room B10, DSU76 (FN31)*Material:* AE *Diam.:* 17 mm *Weight:* 2.2 g *Axis:* 3h?*Module/Denom.:* AE3/*Maiorina**Obv.:* Imp. bust, R; cuirassed, draped, diadem. *Legend:* D N CONSTAN – [TIUS P F AUG]*Rev.:* *FTR*, *FH*. *Legend:* FEL TEMP [REPARATIO]*Mint:* NA *Mint Mark:* illegible*Date:* 351–361 *Ref.:* NA**49***Inventory Number:* 667*Context:* Area B, room B11, DSU90 (FN14)*Material:* AE *Diam.:* 12 mm *Weight:* 1.0 g *Axis:* NA

Module/Denom.: AE4/Fraction of a *centenionalis*?

Obv.: Imp. bust, R; cuirassed, draped, pearl diadem. *Legend:* D N VALE[NTINIANUS P F] AUG

Rev.: Camp gate, two turrets. *Legend:* GLORIA [REI] - PVBLICE

Mint: Thessalonica *Mint Mark:* A/-//[TES]

Date: 383–392 *Ref.:* RIC IX Thessalonica 62(a).2

Image Ref. to the Database: OBV: 00667-AG10--3019; REV: 00667-AG10--3020



Pl. 9.13a–b: obverse and reverse of coin-inv. 667.

50

Inventory Number: 674

Context: Area B, room B11, DSU90 (FN22)

Material: AE *Diam.:* 12 mm *Weight:* 0.6 g *Axis:* NA

Module/Denom.: NA

Condition: Interesting but illegible traces

Date: ND

Image Ref. to the Database: OBV: 00674-AG10--3012; REV: 00674-AG10--3011

51

Inventory Number: 675

Context: Area B, room B11, DSU90 (FN23)

Material: AE *Diam.:* 13 mm *Weight:* 0.7 g *Axis:* NA

Module/Denom.: AE4

Condition: Illegible; fragmentary

Date: ND

52

Inventory Number: 676

Context: Area B, room B11, DSU90 (FN24)

Material: AE *Diam.:* 19 mm *Weight:* 0.9 g *Axis:* 12h

Module/Denom.: AE3/*Centenionalis*?

Obv.: Imp. bust, R; diadem. *Legend:* D N VALEN – [S P F AUG]

Rev.: Victory adv. L, holding wreath and palm. *Legend:* [SECURITAS] REIPUBLICAE

Condition: fragmentary

Mint: NA *Mint Mark:* illegible

Date: 364–378 *Ref.:* NA

Image Ref. to the Database: OBV: 0676-AG08--3664; REV: 0676-AG08--3661

53*Inventory Number:* 677*Context:* Area B, room B11, DSU90 (FN25)*Material:* AE *Diam.:* 10 mm *Weight:* 0.5 g *Axis:* NA*Module/Denom.:* AE4*Condition:* Illegible*Date:* ND**54***Inventory Number:* 679*Context:* Area B, room B11, DSU90 (FN27)*Material:* AE *Diam.:* 12 mm *Weight:* 1.8 g *Axis:* NA*Module/Denom.:* AE4*Condition:* Illegible (not fully cleaned)*Date:* ND**55***Inventory Number:* 682*Context:* Area B, room B11, DSU90 (FN30)*Material:* AE *Diam.:* 14 mm *Weight:* 1.8 g *Axis:* NA*Module/Denom.:* NA*Condition:* Illegible; fragmentary (not fully cleaned)*Date:* ND**56***Inventory Number:* 692*Context:* Area B, room B11, DSU90 (coin from sieving)*Material:* AE *Diam.:* 17 mm *Weight:* 1.4 g *Axis:* 6h*Module/Denom.:* AE3/*Nummus centenionalis?**Obv.:* Imp. bust, R; cuirassed, draped, diadem or laureate. Traces of legend*Rev.:* Two soldiers stg. with spears and shields, two standards between them. Traces of *Gloria Exercitus* legend*Mint:* NA *Mint Mark:* illegible*Date:* 330–335 *Ref.:* NA*Image Ref. to the Database:* OBV: 0692-AG08--3336; REV: 0692-AG08--3339**57***Inventory Number:* 694*Context:* Area B, room B11, DSU90 (coin from sieving)*Material:* AE *Diam.:* 13 mm *Weight:* 2.9 g *Axis:* NA*Module/Denom.:* AE3*Obv.:* Imp. bust, R.; cuirassed, draped, diadem. Legend: [---] P F AUG*Rev.:* Illegible

Mint: NA *Mint Mark:* illegible
Date: 4th c. *Ref.:* NA

58

Inventory Number: 695
Context: Area B, room B11, DSU90 (coin from sieving)
Material: AE *Diam.:* 14 mm *Weight:* 1.3 g *Axis:* NA
Module/Denom.: NA
Condition: Illegible; fragmentary (not fully cleaned)
Date: ND

59

Inventory Number: 671
Context: Area B, room B11, DSU97 (FN19)
Material: AE *Diam.:* 17 mm *Weight:* 1.6 g *Axis:* NA
Module/Denom.: NA
Condition: Illegible (not fully cleaned)
Date: ND

60

Inventory Number: 673
Context: Area B, room B11, DSU97 (FN21)
Material: AE *Diam.:* NA *Weight:* 1.2 g *Axis:* NA
Module/Denom.: NA
Obv.: Traces of imp. bust with diadem
Rev.: Illegible traces
Note: Not fully cleaned; two fragments; no reliable diameter
Mint: NA *Mint Mark:* illegible
Date: 4th c. *Ref.:* NA

61

Inventory Number: 680
Context: Area B, room B11, DSU108 (FN28)
Material: AE *Diam.:* 13 mm *Weight:* 0.7 g *Axis:* NA
Module/Denom.: AE4
Condition: Illegible
Date: ND

62

Inventory Number: 803
Context: Area B, room B11, DSU108 (coin from sieving)
Material: AE *Diam.:* 15 mm *Weight:* 1.8 g *Axis:* NA

Module/Denom.: NA
Condition: Illegible (not fully cleaned)
Date: ND

63

Inventory Number: 684
Context: Area B, room B11, F141 (FN32)
Material: AE *Diam.:* 20 mm *Weight:* 1.8 g *Axis:* 12h
Module/Denom.: AE3/Nummus
Obv.: Imp. bust, R; laureate. *Legend:* CONSTAN – TINUS AUG
Rev.: Votive wreath inscribed VOT / X X. *Legend:* D N CONSTANTINI MAX AUG
Mint: Ticinum *Mint Mark:* -/-//ST
Date: 320–321 *Ref.:* RIC VII Ticinum 140
Image Ref. to the Database: OBV: 0684-AG08--3203; REV: 0684-AG08--3206



Pl. 9.14a–b: obverse and reverse of coin-inv. 684.

64

Inventory Number: 652
Context: Area B, room B12, DSU91 (FN5)
Material: AE *Diam.:* 15 mm *Weight:* 1.9 g *Axis:* NA
Module/Denom.: AE3
Condition: Illegible
Date: ND

65

Inventory Number: 653
Context: Area B, room B12, DSU91 (FN1)
Material: AE *Diam.:* 17 mm *Weight:* 2.3 g *Axis:* 11h?
Module/Denom.: AE3
Obv.: Imp. bust, R; laureate? *Legend:* D N CONSTAN – TIUS P F AUG
Rev.: Traces of design, compatible with *FTR*, *FH*. *Legend:* FEL TEMP – [REPARATIO]
Mint: NA *Mint Mark:* illegible
Date: 351–361 *Ref.:* NA

Note: likely cast

Image Ref. to the Database: OBV: 0653-AG08--3324; REV: 0653-AG08--3327

66

Inventory Number: 654

Context: Area B, room B12, DSU91 (FN4)

Material: AE *Diam.:* 10 mm *Weight:* 0.2 g *Axis:* NA

Module/Denom.: NA

Condition: Illegible; fragmentary

Date: ND

67

Inventory Number: 655

Context: Area B, room B12, DSU91 (FN2)

Material: AE *Diam.:* 13 mm *Weight:* 0.8 g *Axis:* 6h

Module/Denom.: AE4/*Centenionalis* or fraction?

Obv.: Imp. bust, R; diadem or laureate. Traces of legend

Rev.: Illegible with traces of legend [...REI]PUBLICE

Mint: NA *Mint Mark:* illegible

Date: 355–403 *Ref.:* NA

Image Ref. to the Database: OBV: 00655-AG10--3074; REV: 00655-AG10--3073

68

Inventory Number: 656

Context: Area B, room B12, DSU91 (FN7)

Material: AE *Diam.:* 13 mm *Weight:* 2.1 g *Axis:* NA

Module/Denom.: AE3/*Centenionalis*?

Obv.: Imp. bust, R; laureate or diadem. Traces of legend at R

Rev.: Victory adv. L. with wreath, *Sec Reip* type

Mint: NA *Mint Mark:* illegible

Date: 364–378 *Ref.:* NA

Note: Likely cast and/or an imitation

Image Ref. to the Database: OBV: 0656-AG08--0855; REV: 0656-AG08--0858

69

Inventory Number: 657

Context: Area B, room B12, DSU91 (FN6)

Material: AE *Diam.:* 13 mm *Weight:* 2.6 g *Axis:* NA

Module/Denom.: AE3

Obv.: Imp. bust, R; cuirassed, diadem

Rev.: Illegible

Mint: NA *Mint Mark:* illegible

Date: 4th c. *Ref.:* NA
Note: Possibly cast

70

Inventory Number: 658
Context: Area B, room B12, DSU91
Material: AE *Diam.:* 12 mm *Weight:* 1.1 g *Axis:* NA
Module/Denom.: AE4
Condition: Illegible
Date: ND

71

Inventory Number: 659
Context: Area B, room B12, DSU91
Material: AE *Diam.:* 17 mm *Weight:* 1.8 g *Axis:* 6h
Module/Denom.: AE3/*Centenionalis?*
Obv.: Imp. bust, R; cuirassed, pearl diadem. Traces of legend R
Rev.: Victory adv. L with wreath and palm. Traces of legend: [...] REI P[UBL]ICAE. *Sec Reip*
type
Condition: Fragmentary
Mint: NA *Mint Mark:* traces
Date: 364–378 *Ref.:* NA
Image Ref. to the Database: OBV: 0659-AG08--0843; REV: 0659-AG08--0846

72

Inventory Number: 666
Context: Area B, room B12, DSU93 (FN13)
Material: AE *Diam.:* 13 mm *Weight:* 1.8 g *Axis:* NA
Module/Denom.: NA
Condition: Illegible (not fully cleaned)
Date: ND

73

Inventory Number: 670
Context: Area B, room B12, DSU93 (FN18)
Material: AE *Diam.:* 16 mm *Weight:* 4.5 g (see note) *Axis:* 12h
Module/Denom.: AE3/*Centenionalis?*
Obv.: Imp. bust, R; diadem. *Legend:* D N VALE[N... P F AUG]
Rev.: Emperor standing R, looking L with *labarum* and captive. *Legend:* GLORIA RO –
MANORUM
Mint: NA *Mint Mark:* illegible
Date: 364–378 *Ref.:* NA

Note: Valens or Valentinian I. Weight far too heavy. Possibly cast
Image Ref. to the Database: OBV: 0670-AG08--0849; REV: 0670-AG08--0852



Pl. 9.15a–b: obverse and reverse of coin-inv. 670.

74

Inventory Number: 672

Context: Area B, room B12, DSU93 (FN20)

Material: AE *Diam.:* 15 mm *Weight:* 1.7 g *Axis:* NA

Module/Denom.: AE3/AE4

Condition: Illegible

Date: ND

75

Inventory Number: 696

Context: Area B, room B12, DSU93 (coin from sieving)

Material: AE *Diam.:* 13 mm *Weight:* 1.6 g *Axis:* NA

Module/Denom.: AE4

Condition: Illegible

Date: ND

76

Inventory Number: 699

Context: Area B, room B12, DSU93 (coin from sieving)

Material: AE *Diam.:* 14 mm *Weight:* 2.4 g *Axis:* 12h?

Module/Denom.: AE3/*Centenionalis?*

Obv.: Imp. bust, R; cuirassed, draped, diadem

Rev.: Victory adv. L, with wreath and palm. *Legend:* [SECURITAS] REIPUBLICAE

Mint: NA *Mint Mark:* Illegible

Date: 364–378 *Ref.:* NA

Note: Possibly cast

Image Ref. to the Database: OBV: 00699-AG10--3009; REV: 00699-AG10--3010

77

Inventory Number: 668

Context: Area B, room B12, DSU95 (FN15)

Material: AE *Diam.:* 14 mm *Weight:* 2.3 g *Axis:* 6h?
Module/Denom.: AE3/*Centenionalis?*
Obv.: Traces of imp. bust, R. and perhaps legend
Rev.: Victory adv. L, with wreath and palm. *Legend:* [...] RE[IPUBLIC .]
Mint: NA *Mint Mark:* illegible
Date: 364–378 *Ref.:* NA
Note: Possibly cast

78

Inventory Number: 669
Context: Area B, room B12, DSU95 (FN16)
Material: AE *Diam.:* 17 mm *Weight:* 3.6 g *Axis:* NA
Module/Denom.: AE3
Condition: Illegible; fragmentary; not fully cleaned
Date: 4th c.

79

Inventory Number: 801
Context: Area B, room BR12, DSU95 (coin from sieving)
Material: AE *Diam.:* 13 mm *Weight:* 0.8 g *Axis:* NA
Module/Denom.: AE4
Condition: Illegible (not fully cleaned)
Date: ND

80

Inventory Number: 665
Context: Area B, room B12, DSU96 (FN10)
Material: AE *Diam.:* 18 mm *Weight:* 2.3 g *Axis:* 2h?
Module/Denom.: AE3/*Maiorina*
Obv.: Imp. bust, R; cuirassed, draped, pearl diadem. *Legend:* D N CONSTAN – TIUS P F AUG
Rev.: Traces of *FTR*, FH legend and type
Mint: NA *Mint Mark:* illegible
Date: 351–361 *Ref.:* NA
Note: Possibly cast
Image Ref. to the Database: OBV: 0665-AG08--0837; REV: 0665-AG08--0840

81

Inventory Number: 697
Context: Area B, room B12, DSU96 (coin from sieving)
Material: AE *Diam.:* 16 mm *Weight:* 2.7 g *Axis:* 6h
Module/Denom.: AE3
Obv.: Imp. bust, L; helmeted. Legend and other attributes effaced, but reverse type guarantees

that the bust is of Julian

Rev.: Votive wreath inscribed: VOT X / MVLT XX

Mint: Unknown, but an Eastern mint, most likely Antioch or Alexandria.

Mint Mark: Only *officina* legible: A

Date: 362–363 *Ref.*: NA

Image Ref. to the Database: OBV: 0697-AG08--3354; REV: 0697-AG08--3357

82

Inventory Number: 698

Context: Area B, room B12, DSU96 (coin from sieving)

Material: AE *Diam.*: 14 mm *Weight*: 1.5 g *Axis*: NA

Module/Denom.: AE4

Condition: Illegible (not fully cleaned)

Date: ND

83

Inventory Number: 840

Context: Area B, room B12, DSU101 (FN45)

Material: AE *Diam.*: 19 mm *Weight*: 2.6 g *Axis*: 6h

Module/Denom.: AE3/*Centenionalis*?

Obv.: Imp. bust, R; cuirassed, draped, diadem. *Legend*: DN IOVIAN – US P F AUG

Rev.: Votive wreath inscribed: VOT / V

Mint: Alexandria *Mint Mark*: -/-//ALEA

Date: 363–364 *Ref.*: RIC VIII Alexandria 92

Image Ref. to the Database: OBV: 0840-AG08--0861; REV: 0840-AG08--0864



Pl. 9.16a–b: obverse and reverse of coin-inv. 840.

84

Inventory Number: 688

Context: Area B, room B12, DSU107 (FN38)

Material: AE *Diam.*: 18 mm *Weight*: 2.6 g *Axis*: 6h

Module/Denom.: AE3/*Nummus centenionalis*?

Obv.: Imp. bust, R; cuirassed, draped, rosette diadem. *Legend*: CONSTANTINI – NVS MAX AVG

Rev.: Two soldiers standing with spears and shields, two standards between them. *Legend*:
GLOR- IA EXER – CITUS

Mint: Heraclea or Cyzicus *Mint Mark*: -/-//•SMHA or -/-//•SMKA

Date: 330–335 *Ref.*: RIC VII Heraclea 116 or Cyzicus 94

Image Ref. to the Database: OBV: 00688-AG10--0028; REV: 00688-AG10--0029



Pl. 9.17a–b: obverse and reverse of coin-inv. 688.

85

Inventory Number: 690

Context: Area B, room B12, DSU107 (FN42)

Material: AE *Diam.*: 16 mm *Weight*: 1.6 g *Axis*: 6h

Module/Denom.: AE3/Maiorina

Obv.: Imp. bust, R; cuirassed, draped, diadem. *Legend*: D N CONSTAN[– TIU]S P F AUG

Rev.: FTR, FH with legend. Horseman leans forward and clasps horse's neck

Mint: Thessalonica, Heraclea, or Antioch *Mint Mark*: M/-//traces

Date: 355–361 *Ref.*: RIC VIII Thessalonica 208; Heraclea 96; Antioch 191

Image Ref. to the Database: OBV: 0690-AG08--3372; REV: 0690-AG08--3375



Pl. 9.18a–b: obverse and reverse of coin-inv. 690.

86

Inventory Number: 821

Context: Area B, room B12, DSU107 (FN53)

Material: AE *Diam.*: 12 mm *Weight*: 1.2 g *Axis*: NA

Module/Denom.: AE4

Condition: Illegible

Date: ND

87*Inventory Number:* 822*Context:* Area B, room B12, DSU124*Material:* AE *Diam.:* 16 mm *Weight:* 2.1 g *Axis:* NA*Module/Denom.:* AE3/*Centenionalis?**Obv.:* Imp. bust, R*Rev.:* *Gloria Romanorum* type. Traces of emperor standing or adv. R, looking L with *labarum*, likely leading a captive*Mint:* NA *Mint Mark:* illegible*Date:* 364–378 *Ref.:* NA*Image Ref. to the Database:* OBV: 00822-AG10--3029; REV: 00822-AG10--3030**88***Inventory Number:* 824*Context:* Area B, room B12, DSU124 (FN55)*Material:* AE *Diam.:* 13 mm *Weight:* 0.9 g *Axis:* NA*Module/Denom.:* AE4*Obv.:* Traces, illegible*Rev.:* Victory with wreath and palm adv. L. Traces of legend R. Likely *Sec Reip* type*Condition:* not fully cleaned; oddly shaped flan, perhaps fragmentary or an imitation*Mint:* NA *Mint Mark:* illegible*Date:* 364–395 *Ref.:* NA**89***Inventory Number:* 827*Context:* Area B, room B12, DSU124 (coin from sieving)*Material:* AE *Diam.:* > 16 mm *Weight:* 0.7 g *Axis:* 12h*Module/Denom.:* AE3/*Maiorina**Obv.:* Imp. bust, R.; cuirassed, draped, rosette-diadem. Legend: [...] P F AUG*Rev.:* FTR, *FH* (horseman clasping neck of horse) with legend FEL T[...] at L*Mint:* NA *Mint Mark:* illegible traces in exergue. Possible trace of mm in L field*Date:* 351–361 *Ref.:* NA*Note:* Likely an imitation*Image Ref. to the Database:* OBV: 0827-AG08--3360; REV: 0827-AG08—3360

Pl. 9.19a–b: obverse and reverse of coin-inv. 827.

90*Inventory Number:* 828*Context:* Area B, room B12, DSU124 (FN56)*Material:* AE *Diam.:* 15 mm *Weight:* 0.8 g *Axis:* 6h*Module/Denom.:* AE3/AE4*Obv.:* Imp. bust, R; diadem*Rev.:* Victory adv. L with wreath and palm. Most likely *Sec Reip* type*Mint:* NA *Mint Mark:* illegible*Date:* 364–395 *Ref.:* NA**91***Inventory Number:* 1042*Context:* Area B, room B12, DSU124*Material:* AE *Diam.:* 11 mm *Weight:* 0.5 g *Axis:* NA*Module/Denom.:* AE4*Condition:* Illegible (not fully cleaned)*Date:* ND**92***Inventory Number:* 1046*Context:* Area B, room B12, DSU124*Material:* AE *Diam.:* 12 mm *Weight:* 0.8 g *Axis:* NA*Module/Denom.:* AE4*Condition:* Illegible possibly fragmentary (not fully cleaned)*Date:* ND**93***Inventory Number:* 1049*Context:* Area B, room B12, DSU124 (FN57)*Material:* AE *Diam.:* 18 mm *Weight:* 2.5 g *Axis:* 12h*Module/Denom.:* AE3/Maiorina*Obv.:* Imp. bust, R; cuirassed, diadem, pearl diadem. *Legend:* D N CON[...] P F AUG*Rev.:* FTR, FH type. *Legend:* [FEL TEMP RE]PARATIO*Mint:* NA *Mint Mark:* illegible*Date:* 351–361 *Ref.:* NA*Image Ref. to the Database:* OBV: 01049-AG10--0032; REV: 01049-AG10--0033



Pl. 9.20a–b: obverse and reverse of coin-inv. 1049.

94*Inventory Number:* 1076*Context:* B R12 DSU124 (coin from sieving)*Material:* AE *Diam.:* 11 mm *Weight:* 0.5 g *Axis:* NA*Module/Denom.:* AE4*Condition:* Illegible (not fully cleaned)*Date:* ND**95***Inventory Number:* 1099*Context:* Area B, room B12, DSU124 (FN58)*Material:* AE *Diam.:* 15 mm *Weight:* 1.1 g *Axis:* NA*Module/Denom.:* AE4*Obv.:* Imp. bust, R; diadem. Illegible traces of legend*Rev.:* Illegible*Condition:* Not fully cleaned*Mint:* NA *Mint Mark:* illegible*Date:* 4th c. *Ref.:* NA**96***Inventory Number:* 678*Context:* Area B, room B12, F135 (FN26)*Material:* AE *Diam.:* 12 mm *Weight:* 1.8 g *Axis:* NA*Module/Denom.:* AE4*Condition:* Illegible; broken (not fully cleaned)*Date:* ND**97***Inventory Number:* 685*Context:* Area B, room B13, DSU94 (FN33)*Material:* AE *Diam.:* 15 mm *Weight:* 1.2 g *Axis:* 6h*Module/Denom.:* AE3/*Nummus centenionalis**Obv.:* Imp. bust, R; cuirassed, draped, laurel and rosette diadem. Traces of legend*Rev.:* Two victories, facing each other, each with wreath and palm. *Legend:* [VICTORI]AE D D
[AUG]GQ N N

Mint: NA *Mint Mark:* illegible
Date: 341–348 *Ref.:* NA

98

Inventory Number: 700
Context: Area B, room B13, DSU94 (coin from sieving)
Material: AE *Diam.:* NA *Weight:* 0.1 g *Axis:* NA
Module/Denom.: NA
Condition: Illegible; fragmentary
Note: Originally recorded as having a diam. of 13 mm, weight of 0.5 g; possibly not a coin

99

Inventory Number: 681
Context: Area B, room B13, DSU104 (FN29)
Material: AE *Diam.:* 9 mm *Weight:* 0.3 g *Axis:* NA
Module/Denom.: NA
Condition: Illegible; possibly fragmentary (not fully cleaned)
Date: ND

100

Inventory Number: 691
Context: Area B, room B13, DSU105 (FN43)
Material: AE *Diam.:* 13 mm *Weight:* 0.9 g *Axis:* NA
Module/Denom.: NA
Condition: Illegible; fragmentary (not fully cleaned)
Date: ND

101

Inventory Number: 802
Context: Area B, room B13, DSU105
Material: AE *Diam.:* 10 mm *Weight:* 0.4 g *Axis:* NA
Module/Denom.: NA
Condition: Illegible; fragmentary (not fully cleaned)
Date: ND

102

Inventory Number: 683
Context: Area B, room B13, DSU109 (FN31)
Material: AE *Diam.:* 14 mm *Weight:* 1.3 g *Axis:* NA
Module/Denom.: AE4
Condition: Illegible (not fully cleaned)
Date: ND

103*Inventory Number:* 804*Context:* Area B, room B13, DSU109 (coin from sieving)*Material:* AE *Diam.:* 13 mm *Weight:* 2.5 g *Axis:* NA*Module/Denom.:* NA*Condition:* Illegible; fragmentary (not fully cleaned); perhaps two coins*Date:* ND**104***Inventory Number:* 805*Context:* Area B, room B13, DSU109 (coin from sieving)*Material:* AE *Diam.:* 10 mm *Weight:* 0.6 g *Axis:* 3h*Module/Denom.:* AE4*Obv.:* Imp. bust, R; cuirassed, draped, pearl diadem. Bust appears to be nearly three-quarters. Traces of legend, although possible that the legend is symbolic (i.e., not actual legend)*Rev.:* Victory adv. L with palm or trophy and captive? Figure crudely executed. Legend and mint mark appear to be symbolic*Mint:* NA *Mint Mark:* illegible*Date:* Late 4th–5th c. *Ref.:* NA*Note:* “Barbarous” imitation. Cf. 125.*Image Ref. to the Database:* OBV: 0805-AG08--0873; REV: 0805-AG08--0876

Pl. 9.21a–b: obverse and reverse of coin-inv. 805.

105*Inventory Number:* 686*Context:* Area B, room B13, DSU110 (FN34)*Material:* AE *Diam.:* 15 mm *Weight:* 2.5 g *Axis:* NA*Module/Denom.:* AE3/AE4*Condition:* Illegible (not fully cleaned)*Date:* ND**106***Inventory Number:* 687*Context:* Area B, room B13, DSU110 (FN37)*Material:* AE *Diam.:* 14 mm *Weight:* 1.3 g *Axis:* NA*Module/Denom.:* AE3/*Centenionalis**Obv.:* Illegible

Rev.: Emperor helmeted and in military dress stg. L, holding globe and spear. *Legend*: SPES
[REI – P]UBLICE

Mint: Heraclea, Nicomedia, or Cyzicus *Mint Mark*: -/!/SM . .

Date: 355–363 *Ref.*: RIC VIII Heraclea 98-100; Nicomedia 112-114, 116-117; Cyzicus
117-124

Note: Cast (note the sprue stem channel)

Image Ref. to the Database: OBV: 0687-AG08--0825; REV: 0687-AG08--0828



Pl. 9.22a–b: obverse and reverse of coin-inv. 687.

107

Inventory Number: 689

Context: Area B, room B13, DSU110 (FN41)

Material: AE *Diam.*: 9 mm *Weight*: 0.3 g *Axis*: NA

Module/Denom.: AE4

Condition: Illegible

Date: ND

108

Inventory Number: 826

Context: Area B, room B13, DSU110 (FN49)

Material: AE *Diam.*: NA *Weight*: 0.1 g *Axis*: NA

Module/Denom.: NA

Condition: Illegible; fragmentary (not fully cleaned)

Date: ND

109

Inventory Number: 823

Context: Area B, room B13, DSU115 (coin from sieving; test trench between rooms B12 and
B13)

Material: AE *Diam.*: 11 mm *Weight*: 0.6 g *Axis*: NA

Module/Denom.: AE4

Condition: Illegible

Date: ND

110*Inventory Number:* 825*Context:* Area B, room B13, DSU115 (FN44) (test trench between rooms B12 and B13)*Material:* AE *Diam.:* 11 mm *Weight:* 1.0 g *Axis:* NA*Module/Denom.:* AE4*Condition:* Illegible (not fully cleaned)*Date:* ND**111***Inventory Number:* 839*Context:* Area B, room B13, DSU115 (coin from sieving; test trench between rooms B12 and B13)*Material:* AE *Diam.:* 15 mm *Weight:* 1.6 g *Axis:* NA*Module/Denom.:* AE3/AE4*Obv.:* Imp. bust, R; diadem*Rev.:* Illegible*Mint:* NA *Mint Mark:* illegible*Date:* 4th c. *Ref.:* NA**112***Inventory Number:* 841*Context:* Area B, room B13, F152 (FN50)*Material:* AE *Diam.:* NA *Weight:* 0.7 g *Axis:* NA*Module/Denom.:* NA*Condition:* Illegible; fragmentary (not fully cleaned)*Date:* ND**113***Inventory Number:* 829*Context:* Area B, room B13, F153 (FN52)*Material:* AE *Diam.:* 10 mm *Weight:* 0.4 g *Axis:* NA*Module/Denom.:* NA*Condition:* Illegible; fragmentary (not fully cleaned)*Date:* ND**114***Inventory Number:* 1009*Context:* Area B, room B14, DSU84 (FN54)*Material:* AE *Diam.:* 18 mm *Weight:* 2.9 g *Axis:* NA*Module/Denom.:* AE3/Nummus*Obv.:* Imp. bust, L; draped, laureate, globe and scepter in L hand, *mappa* in R. *Legend:* [D N FL CL] CONSTANTINUS NOB C

Rev.: Camp gate with three turrets or two turrets and a star. Traces of legend PROVIDEN – TIAE CAESS

Mint: Heraclea? Mint Mark: -/-/MTH . ?

Date: 317–320 Ref.: RIC VII Heraclea 16-49?

Image Ref. to the Database: OBV: 01009-AG10--0034; REV: 01009-AG10--0035

115

Inventory Number: 1035

Context: Area B, room B14, DSU127 (FN64)

Material: AE Diam.: NA Weight: 1.4 g Axis: NA

Module/Denom.: NA

Condition: Illegible; fragmentary (not fully cleaned)

Date: ND

116

Inventory Number: 1071

Context: Area B, room B14, DSU127 (FN62)

Material: AE Diam.: 10 mm Weight: 0.4 g Axis: NA

Module/Denom.: AE4

Condition: Illegible (not fully cleaned)

Date: ND

117

Inventory Number: 1072

Context: Area B, room B14, DSU127 (FN71)

Material: AE Diam.: 13 mm Weight: 1.0 g Axis: NA

Module/Denom.: AE4

Obv.: Illegible

Rev.: Possibly victory adv. L

Mint: NA Mint Mark: illegible

Date: Late 4th–5th c. Ref.: NA

118

Inventory Number: 1091

Context: Area B, room B14, DSU127 (FN65)

Material: AE Diam.: 17 mm Weight: 2.8 g Axis: NA

Module/Denom.: AE3/Centenionalis?

Obv.: Imp. bust, R; cuirassed, draped, diadem. Legend: [D N GRATIA] – NUS P F AUG

Rev.: Victory adv. L with palm and wreath. Legend: SECU[RITAS] REIPUBLICAE

Mint: Alexandria Mint Mark: -/-/ALEA

Date: 367–375 Ref.: RIC IX Alexandria 5c

Note: Likely cast

Image Ref. to the Database: OBV: 1091-AG08--3691; REV: 1091-AG08--3694



Pl. 9.23a–b: obverse and reverse of coin-inv. 1091.

119*Inventory Number:* 1200*Context:* area B, room B14, DSU127 (FN63)*Material:* AE *Diam.:* 14 mm *Weight:* 0.7 g *Axis:* 9h*Module/Denom.:* AE3/*Centenionalis?**Obv.:* Imp. bust, R; diadem. Traces of legend*Rev.:* Possible traces of a victory adv. L. *Sec Reip* type*Condition:* Fragmentary*Mint:* NA *Mint Mark:* illegible*Date:* Late 4th–5th c. *Ref.:* NA**120***Inventory Number:* 1073*Context:* Area B, room B15, DSU86 (FN61)*Material:* AE *Diam.:* 12 mm *Weight:* 2.1 g *Axis:* NA*Module/Denom.:* AE4*Condition:* Illegible (not fully cleaned)*Date:* ND**121***Inventory Number:* 1075*Context:* Area B, room B15, DSU86 (FN66)*Material:* AE *Diam.:* NA *Weight:* 0.4 g *Axis:* NA*Module/Denom.:* NA*Condition:* Illegible; fragmentary (not fully cleaned)*Date:* ND**122***Inventory Number:* 1095*Context:* Area B, room B15, DSU86 (FN80)*Material:* AE *Diam.:* 17 mm *Weight:* 1.3 g *Axis:* 10h?*Module/Denom.:* AE3/*Nummus centenionalis?**Obv.:* Imp. bust, R; diadem. Traces of legend

Rev.: Two soldiers, standing looking at one another, holding spear and resting hand on shield; between them one standard. *Legend*: [GLOR] – IA EXER [CITVS]

Mint: Most likely Heraclea or Nicomedia *Mint Mark*: -/[S]MHA or -/[S]MNA?

Date: 335–341 *Ref.*: NA

Note: Possibly cast



Pl. 9.24a–b: obverse and reverse of coin-inv. 1095.

123

Inventory Number: 1008

Context: Area B, room B15, DSU129 (FN70)

Material: AE *Diam.*: 16 mm *Weight*: 2.7 g *Axis*: 12h

Module/Denom.: AE3/Centenionalis?

Obv.: Imp. bust, R.; cuirassed, draped, diadem. *Legend*: [D N VALE]N – S P F AUG

Rev.: Victory adv. L with wreath and palm. *Legend*: SECURITA[S –REI PUBLICAE]

Mint: Alexandria *Mint Mark*: -/[ALEA

Date: 364–375 *Ref.*: NA

Image Ref. to the Database: OBV: 01008-AG10--0024; REV: 01008-AG10--0025

124

Inventory Number: 1033

Context: Area B, room B15, DSU129 (FN74)

Material: AE *Diam.*: 14 mm *Weight*: 1.6 g *Axis*: NA

Module/Denom.: AE4

Condition: Illegible; broken (not fully cleaned)

Date: ND

125

Inventory Number: 1041

Context: Area B; room B15, DSU129 (FN67)

Material: AE *Diam.*: 9 mm *Weight*: 0.3 g *Axis*: NA

Module/Denom.: AE4

Obv.: Imp. bust, R

Rev.: Victory adv. L with wreath and captive? Crudely executed

Mint: NA *Mint Mark*: illegible

Date: Late 4th–5th c. *Ref.*: NA

Note: “Barbarous” imitation. Cf. **104**

Image Ref. to the Database: OBV: 01041-AG10-0236; REV: 01041-AG10-0235)



Pl. 9.25a–b: obverse and reverse of coin-inv. 1041.

126

Inventory Number: 1060

Context: Area B, room B15, DSU129 (FN69)

Material: AE *Diam.:* 8 mm *Weight:* 0.5 g *Axis:* NA

Module/Denom.: AE4

Condition: Illegible (not fully cleaned)

Date: ND

127

Inventory Number: 1061

Context: Area B, room B15, DSU129 (FN83)

Material: AE *Diam.:* 13 mm *Weight:* 1.0 g *Axis:* NA

Module/Denom.: AE4

Obv.: Traces of imp. bust, R

Rev.: Illegible

Mint: NA *Mint Mark:* illegible

Date: 4th c. *Ref.:* NA

128

Inventory Number: 1077

Context: Area B, room B15, DSU129 (FN68)

Material: AE *Diam.:* 18 mm *Weight:* 3.2 g *Axis:* NA

Module/Denom.: AE3

Condition: Illegible; fragmentary (not fully cleaned)

Date: ND

129

Inventory Number: 1063

Context: Area B, room B15, DSU132 (FN78)

Material: AE *Diam.:* 13 mm *Weight:* 0.3 g *Axis:* NA

Module/Denom.: AE4

Condition: Fragmentary (not fully cleaned)

Date: ND

130*Inventory Number:* 1064*Context:* Area B, room B15, DSU132 (FN79)*Material:* AE *Diam.:* 11 mm *Weight:* 0.3 g *Axis:* NA*Module/Denom.:* AE4*Obv.:* Imp. bust, R.; diadem*Rev.:* Illegible*Mint:* NA *Mint Mark:* illegible*Date:* Late 4th–5th c. *Ref.:* NA**131***Inventory Number:* 1065*Context:* Area B, room B15, DSU132 (FN76)*Material:* AE *Diam.:* 11 mm *Weight:* 0.7 g *Axis:* NA*Modul/Denom.:* AE4*Condition:* Illegible*Date:* ND**132***Inventory Number:* 1093*Context:* Area B, room B15, DSU132 (FN77)*Material:* AE *Diam.:* 13 mm *Weight:* 1.3 g *Axis:* 6h*Module/Denom.:* AE3/AE4*Obv.:* Possible traces of imp. bust, R*Rev.:* Victory adv. L?*Mint:* NA *Mint Mark:* illegible*Date:* 4th c. *Ref.:* NA**133***Inventory Number:* 1066*Context:* Area B, room B15, DSU137 (FN82)*Material:* AE *Diam.:* 13 mm *Weight:* 1.6 g *Axis:* NA*Module/Denom.:* AE4/Fraction of *centenionalis*?*Obv.:* Illegible*Rev.:* Victory adv. L with captive. *Sal Reip* type*Mint:* NA *Mint Mark:* illegible*Date:* 383–403 *Ref.:* NA*Image Ref. to the Database:* OBV: 1066-AG08--3715; REV: 1066-AG08--3718**134***Inventory Number:* 1096*Context:* Area B, room B15, DSU137 (FN85)

Material: AE *Diam.:* 13 mm *Weight:* 1.1 g *Axis:* 12h
Module/Denom.: AE3?
Obv.: Imp. bust, R.; cuirassed, draped, diadem
Rev.: Victory adv. L with wreath, but arm down? *SecReip* type?
Mint: NA *Mint Mark:* illegible
Date: Late 4th c. *Ref.:* NA
Note: Coin seems to have lost a good deal of its circumference; may be cast imitation
Image Ref. to the Database: OBV: 1096-AG08--3754; REV: 1096-AG08--3751

135

Inventory Number: 1097
Context: Area B, room B15, DSU137 (FN84)
Material: AE *Diam.:* 18 mm *Weight:* 4.6 g *Axis:* 1h?
Module/Denom.: AE2/*Maiorina*
Obv.: Imp. bust, cuirassed, draped. Traces of legend
Rev.: FTR, FH. Legend: [FEL] TEMP ...
Mint: NA *Mint Mark:* illegible
Date: 348–355 *Ref.:* NA

136

Inventory Number: 1034
Context: Area B, room B17, DSU152 (FN100)
Material: AE *Diam.:* 14 mm *Weight:* 1.1 g *Axis:* NA
Module/Denom.: NA
Condition: Illegible; fragmentary (not fully cleaned)
Date: ND

137

Inventory Number: 1078
Context: Area B, room B17, DSU152 (FN101)
Material: AE *Diam.:* 11 mm *Weight:* 0.8 g *Axis:* NA
Module/Denom.: AE4
Condition: Illegible (not fully cleaned)
Date: ND

138

Inventory Number: 1203
Context: Area B, room B17, DSU152 (FN98)
Material: AE *Diam.:* 15 mm *Weight:* 1.7 g *Axis:* NA
Module/Denom.: AE4/*Nummus centenionalis*
Obv.: Imp. bust, R; head only, diadem. Legend most likely: D N CONSTA – NS P F AUG.
Rev.: Votive wreath inscribed: VOT / XX / MULT / XXX

Mint: Heraclea, Constantinople, Nicomedia, Cyzicus, or Antioch

Mint Mark: Illegible

Date: 347–348 *Ref.:* NA

139

Inventory Number: 1074

Context: Area B, room B18, DSU156 (coin from sieving)

Material: AE *Diam.:* 15 mm *Weight:* 1.4 g *Axis:* NA

Module/Denom.: AE3/AE4

Condition: Illegible; fragmentary (not fully cleaned)

Date: ND

140

Inventory Number: 1202

Context: Area B, room B18, DSU156 (FN99)

Material: AE *Diam.:* 12 mm *Weight:* 0.6 g *Axis:* NA

Module/Denom.: AE4

Condition: Illegible (not fully cleaned)

Date: ND

141

Inventory Number: 1081

Context: Area B, room B19, DSU171 (coin from sieving)

Material: AE *Diam.:* 13.5 mm *Weight:* 1.4 g *Axis:* 10h?

Module/Denom.: AE3/*Centenionalis*?

Obv.: Imp. bust, R; cuirassed, draped, diadem

Rev.: Victory adv. L with wreath and palm; *SecReip* type

Mint: NA *Mint Mark:* illegible

Date: 364–378 *Ref.:* NA

Note: Possibly cast

Image Ref. to the Database: OBV: 1081-AG08--3679; REV: 1081-AG08--3682

142

Inventory Number: 1201

Context: Area B, room B19, DSU171 (FN105)

Material: AE *Diam.:* 13 mm *Weight:* 1.0 g *Axis:* 6h

Module/Denom.: AE4/Fraction of *centenionalis*?

Obv.: Imp. bust, R; cuirassed, draped, pearl diadem. *Legend:* [D N AR]CAD – IUS P F AUG

Rev.: Votive wreath, inscribed: VOT / X / MVLV / XX

Mint: Alexandria *Mint Mark:* -/-//ALEA or -/-//ALEΔ

Date: 383–393 *Ref.:* RIC IX Alexandria 19d

Image Ref. to the Database: OBV: 01201-AG10--0036; REV: 01201-AG10--0037

143*Inventory Number:* 693*Context:* Area B, room B19m DSU173 (FN107)*Material:* AE *Diam.:* 12 mm *Weight:* 1.0 g *Axis:* NA*Module/Denom.:* AE4*Condition:* Illegible; fragmentary (not fully cleaned)*Date:* ND**144***Inventory Number:* 1062*Context:* Area B, room B19, DSU173*Material:* AE *Diam.:* 10 mm *Weight:* 0.7 g *Axis:* NA*Module/Denom.:* AE4*Obv.:* Imp. bust, R; wreath or diadem. Traces of legend L*Rev.:* Illegible traces*Mint:* NA *Mint Mark:* illegible*Date:* Late 4th–5th c. *Ref.:* NA*Note:* Possibly an imitation, based on the obverse portrait*Image Ref. to the Database:* OBV: 1062-AG08--3707; REV: 1062-AG08--3704**145***Inventory Number:* 1086*Context:* Area B, room B19, DSU173 (FN106)*Material:* AE *Diam.:* 14 mm *Weight:* 1.4 g *Axis:* 12h*Module/Denom.:* AE3/*Nummus centenionalis?**Obv.:* Imp. bust, R; head only, rosette or laurel and rosette diadem. *Legend:* [D N CO]NSTA – NS P F [AVG]*Rev.:* Two soldiers, standing looking at one another, holding spear and resting hand on shield; between them one standard. *Legend:* GLOR - IA EXERC – [ITUS]*Mint:* Constantinople *Mint Mark:* -/-/CONS[.]*Date:* 337–340 *Ref.:* RIC VIII Constantinople 29, 30, 45*Image Ref. to the Database:* OBV: 1086-AG08--3697; REV: 1086-AG08--3700**146***Inventory Number:* 1094*Context:* Area B, room B19, DSU173 (FN108)*Material:* AE *Diam.:* 14 mm *Weight:* 1.4 g *Axis:* NA*Module/Denom.:* AE3/AE4*Obv.:* Imp. bust, R; diadem. Traces of legend*Rev.:* Illegible*Mint:* NA *Mint Mark:* illegible*Date:* 4th c. *Ref.:* NA

147*Inventory Number:* 1045*Context:* Area B, room B19, F180 (FN88)*Material:* AE *Diam.:* 14 mm *Weight:* 2.6 g *Axis:* NA*Module/Denom.:* AE3?*Obv.:* Imp. bust, R. Traces of legend*Rev.:* Traces of stg. or adv. figure and legend*Mint:* NA *Mint Mark:* illegible*Date:* 4th c. *Ref.:* NA*Note:* Weight seems heavy for module*Image Ref. to the Database:* OBV: 1045-AG08--3366; REV: 1045-AG08--3369)**148***Inventory Number:* 1092*Context:* Area B, room B20, DSU143 (FN91)*Material:* AE *Diam.:* 15 mm *Weight:* 1.6 g *Axis:* NA*Module/Denom.:* AE3/AE4*Condition:* Illegible*Date:* ND**149***Inventory Number:* 1056*Context:* Area B, room B21, DSU138 (FN86)*Material:* AE *Diam.:* 19 mm *Weight:* 3.1 g *Axis:* NA*Module/Denom.:* AE3/Nummus*Obv.:* Imp. bust, R; cuirassed, draped, rosette diadem. *Legend:* CONSTAN - TINVS AVG*Rev.:* Camp gate, door, two turrets, star above. *Legend:* PROVIDEN - TIAE AVGG*Mint:* Thessalonica *Mint Mark:* -/A//SMTS*Date:* 328 *Ref.:* RIC VII Thessalonica 169*Image Ref. to the Database:* OBV: 01056-AG10--0030; REV: 01056-AG10--0031**150***Inventory Number:* 1038*Context:* Area B, room B23, DSU147 (FN97)*Material:* AE *Diam.:* 21 mm *Weight:* 2.5 g *Axis:* 6h*Module/Denom.:* AE3/Nummus*Obv.:* Imp. bust, R; laureate, cuirassed, draped. *Legend:* IMP CONSTANTINUS P F AUG*Rev.:* Sol radiate, stg. L, raising R hand, globe in L, chlamys across L shoulder. *Legend:* SOLI IN
- VI - CTO COMITI*Mint:* Rome *Mint Mark:* (R on X)/F//RT*Date:* 314–315 *Ref.:* RIC VII Rome 27*Image Ref. to the Database:* OBV: 01038-AG10--0026; REV: 01038-AG10--0027



Pl. 9.26a–b: obverse and reverse of coin-inv. 1038.

151*Inventory Number:* 1044*Context:* Area B, room B23, DSU147 (coin from sieving)*Material:* AE *Diam.:* 20 mm *Weight:* 2.2 g *Axis:* 12h*Module/Denom.:* AE3/Nummus*Obv.:* Imp. bust, R; cuirassed, laureate. *Legend:* IMP CONSTANTINUS AU[G]*Rev.:* Sol, stg. R, looking L, raising R hand, globe in L, chlamys across L shoulder. *Legend:* SOLIINVIC – TO [COMI]TI*Mint:* Lyons *Mint Mark:* A/S//PLG*Date:* 316 *Ref.:* variant of *RIC VII Lyons* 53 (obv.) and 62 (rev.)*Image Ref. to the Database:* OBV: 1044-AG08--3348; REV: 1044-AG08--3351

Pl. 9.27a–b: obverse and reverse of coin-inv. 1044.

152*Inventory Number:* 1098*Context:* Area B, room B24, DSU174 (FN109)*Material:* AE *Diameter:* 13 mm *Weight:* 1.1 g *Axis:* 6h*Module/Denom.:* AE3/Centenionalis?*Obv.:* Imp. bust, R; diadem*Rev.:* *Sec Reip*, Victory adv. L with wreath and palm, no extant legend*Mint:* NA *Mint Mark:* illegible*Date:* 364–378 *Ref.:* NA