

**50  
DAYS**

# ROHINGYA REFUGEE CRISIS

Credit: OCHA/Anthony Burke

Since 25 August, more than half a million Rohingya refugees have fled violence in Myanmar and crossed into Cox's Bazar, Bangladesh. Not only has the pace of new arrivals made this the fastest growing refugee crisis in the world, the concentration of refugees in Cox's Bazar is now amongst the densest in the world.

## Key numbers

**212,000**

Rohingya estimated to be in Cox's Bazar before the August influx

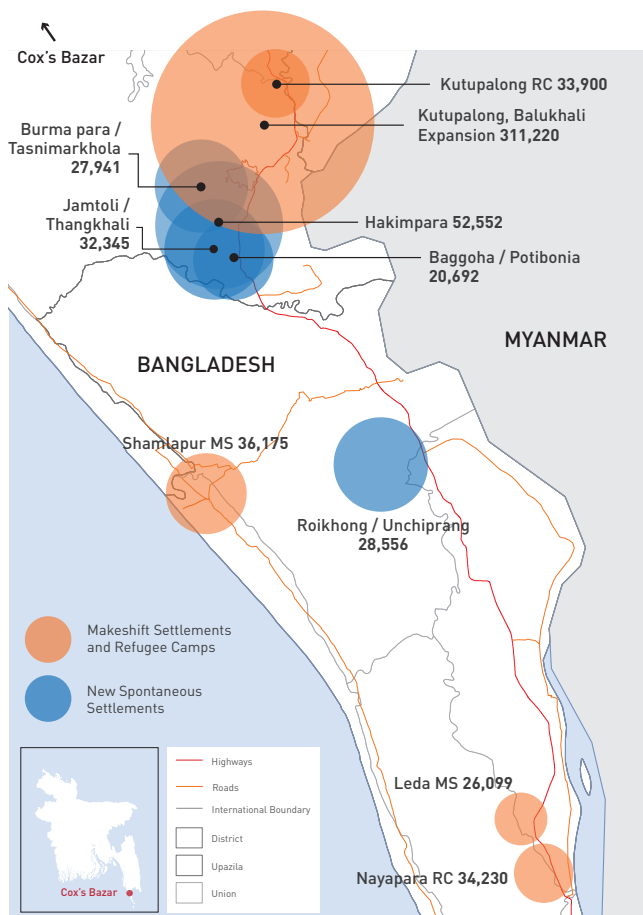
**537,000**

New arrivals as of 15 October 2017

**749,000+**

Total number of Rohingya refugees estimated to be in Cox's Bazar.

## Site locations and population

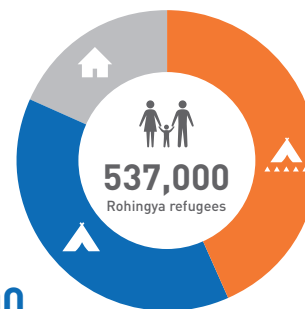


**89,000**

arrivals in host communities

**162,000**

arrivals in new spontaneous sites



**286,000**

arrivals in makeshift settlements/camps

## Host communities

	Prior to Aug Influx	Aug 25 Influx	Total population
Cox's Bazar Sadar	12,485	2,805	15,290
Ramu	1,600	1,395	2,995
Teknaf	34,437	37,920	71,607
Ukhia	8,160	31,107	39,559
Naikhongchhari (Bandarban)	-	16,200	16,200

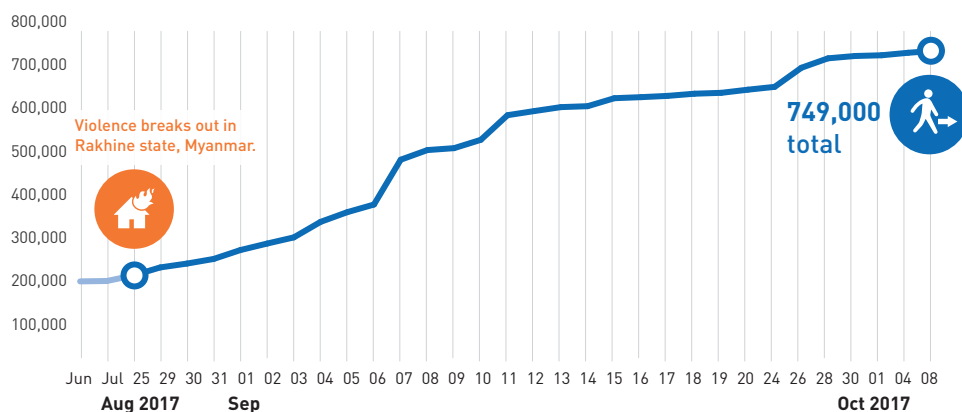
## Refugee total population timeline - 25 Aug to present



### RAKHINE, MYANMAR

25 August 2017

On 25 August insurgents attacked army and police posts in Rakhine, resulting in violence, mass displacement of civilians and the suspension of most aid activities. In the 50 days since, more than half a million refugees have fled into Bangladesh.



## Humanitarian response (since 25 August)



**110,000**

households have received emergency shelter kits.



**536,000**

refugees reached with some form of food assistance.



**271,700**

people have been reached with health care services.



**370,000**

370,000 refugees reached with immediate WASH assistance.



**27,700**

children received support in 128 different Child Friendly Spaces (CFS).



**91,300**

most vulnerable people reached with nutrition intervention.



**40,000**

children are receiving early learning and non-formal basic education.



**125,000**

site management activities started in five zones, reaching 125,000 individuals.



**51**

humanitarian partners present in the response.

## The numbers in perspective

### LUXEMBOURG

**580,000 est.**  
population



**2,590 km<sup>2</sup>**

The current scale of the influx is equivalent to the entire population of Luxembourg fleeing their homes in 50 days, without food, water or shelter. And then settling in an area less than 1% the size of where they came from.

### REFUGEE INFLUX

**537,000**  
population



**10 km<sup>2</sup>**

## Funding (US\$ millions)

### UN CENTRAL EMERGENCY RESPONSE FUND (CERF)

**7M** CERF allocation Sep 2017

**12M** CERF allocation Oct 2017

**19M**

total CERF allocated in 2017

### HUMANITARIAN RESPONSE PLAN 2017

**434M**

requested in the Humanitarian Response Plan 2017

**24%**

funded (FTS as of 15 October)